



Brit



GLUTEN & GRAIN-FREE VETERINARY DIET

*for dogs
& cats*





About us

VAFO GROUP: CERTIFIED PET FOOD PRODUCER

VAFO GROUP IS THE LEADING PRODUCER OF PREMIER AND SUPER-PREMIER PET FOODS, PET FOOD SUPPLEMENTS, AND NUTRITIONAL SUPPLEMENTS FOR BOTH DOGS AND CATS.

VAFO Group was founded in 1994, and has already celebrated its 25th anniversary. Over the past two decades the company has achieved unbelievable growth and become one of the leading producers in Europe. In 2019, VAFO Group created a turnover of over 215 million Euros.

The company's primary goal is to produce superior products that fulfil the highest quality standards. With a focus on premium quality, all of the company's production plants are equipped with the most modern technology, with the objective of ensuring an array of options in the field producing premium-quality products. Among the newest investments, you'll find fresh meat extrusion machinery, the company's own laboratory, as well as the completely new production plant, which is dedicated to manufacturing wet food in accordance with the same production standards of food made for human consumption.

The Brit brand, also known as the company's flagship, was created in 1999. Today, Brit products are delivered to over 75 countries spaced over four continents, and it holds a significant share of the market in both Central and Eastern Europe, Scandinavia, and the Baltics. In terms of the systematic development derivative of the values of the company - providing pets with the highest of care - VAFO Group has designed a new line of veterinary diets: BRIT Veterinary Diet. This initiative embodies the highest expert knowledge gained over the course of many years of successful development and production of both dog and cat food. The goal is to provide veterinarians and their clients a safe alternative to the current brands.



BRIT VETERINARY DIETS – NUTRITIONAL APPROACH

THIS SERIES OF BRIT DIETARY PET FOOD **DOES NOT CONTAIN GLUTEN**. THE PROTEIN SOURCES HAVE BEEN **CAREFULLY SELECTED**, SO THEY CORRESPOND TO THE PHYSIOLOGY OF CARNIVORES. THE RECIPES ARE ENRICHED WITH FUNCTIONAL INGREDIENTS, SUCH AS ADDITIVES RICH IN PROBIOTICS, BIOACTIVE VITAMINS, AND DHA AND EPA, **WHICH SUPPORT THE NUTRITIONAL AND FUNCTIONAL PROPERTIES OF THE DIETARY PET FOOD**.

PRIMARY BENEFITS OF OUR RECIPES:

1. GLUTEN AND GRAIN-FREE VETERINARY DIETS

- Gluten-free ingredients eliminate the risk of gluten allergies and enteropathy
- Veterinary diets with a low glycaemic index for obesity prevention

2. INGREDIENTS REDUCING THE RISK OF ADVERSE FOOD REACTIONS

- Insect, salmon, herring, lamb and turkey protein limit the risk of food allergies
- A hypoallergenic diet free of chicken protein and chicken fat

3. VETERINARY DIETS CONTAINING PROBIOTICS AND PREBIOTICS

- Probiotic culture for digestion and immunity support
- Complex mixture of prebiotics fibre for optimal microbiome functions

4. HIGH CONCENTRATION OF EPA & DHA OMEGA-3 FATTY ACIDS FROM PLANKTON

- Active form of EPA and DHA from schizochytrium limacinum plankton
- High concentration of EPA and DHA with distinct anti-inflammation effects

5. VETERINARY MEAT DIETS

- Proteins from meat and animal components as a primary ingredient
- Ingredients appropriate to physiological demands of carnivores

**TESTED AT VETERINARY CLINICS
ACCORDING TO THE STANDARD
METHODOLOGY**



VETERINARY DIETS FOR DOGS

Brit G&GF Veterinary Diets Dog Ultra-Hypoallergenic

Dry food: 12 kg, 2 kg

Brit GF Veterinary Diets Dog Hypoallergenic

Dry food: 12 kg, 2 kg

Brit GF Veterinary Diets Dog Gastrointestinal

Dry food: 12 kg, 2 kg

Brit G&GF Veterinary Diets Dog Gastrointestinal-Low Fat

Dry food: 12 kg, 2 kg

Brit G&GF Veterinary Diets Dog Veg High Fibre

Dry food: 12 kg, 2 kg

Brit GF Veterinary Diets Dog Mobility

Dry food: 12 kg, 2 kg

Brit GF Veterinary Diets Dog Obesity

Dry food: 12 kg, 2 kg

Brit GF Veterinary Diets Dog Diabetes

Dry food: 12 kg, 2 kg

Brit GF Veterinary Diets Dog Struvite

Dry food: 12 kg, 2 kg

Brit GF Veterinary Diets Dog Renal

Dry food: 12 kg, 2 kg

Brit GF Veterinary Diets Dog Hepatic

Dry food: 12 kg, 2 kg

Brit G&GF Veterinary Diets Dog Sterilised

Dry food: 12 kg, 2 kg



VETERINARY DIETS FOR DOGS

Brit GF Veterinary Diet for Dogs Hypoallergenic

Wet food: 400 g

Brit GF Veterinary Diet for Dogs Gastrointestinal

Wet food: 400 g

Brit GF Veterinary Diet for Dogs Joint & Mobility

Wet food: 400 g

Brit GF Veterinary Diet for Dogs Obesity

Wet food: 400 g

Brit GF Veterinary Diet for Dogs Diabetes

Wet food: 400 g

Brit GF Veterinary Diet for Dogs Struvite

Wet food: 400 g

Brit GF Veterinary Diet for Dogs Renal

Wet food: 400 g

Brit GF Veterinary Diet for Dogs Hepatic

Wet food: 400 g

Brit GF Veterinary Diet for Dogs and Cats Recovery

Wet food: 400 g





Brit

GLUTEN & GRAIN-FREE
VETERINARY DIET



ULTRA - HYPOALLERGENIC

COMPLETE AND BALANCED HYPOALLERGENIC DIETETIC DOG FOOD
WITH INSECT PROTEIN FOR REDUCTION OF FOOD INTOLERANCES

INDICATIONS:

- MITIGATION OF SKIN AND DIGESTIVE SYMPTOMS CAUSED BY FOOD ALLERGIES
- REDUCTION OF ATOPIC AND PRURITIC DERMATOLOGICAL SYMPTOMS
- STRENGTHENS THE FORMATION OF THE NATURAL SKIN BARRIER AND IMMUNITY
- SUPPORTS THE HEALING OF INFLAMMATORY SKIN DISEASES



NUTRITIONAL PROPERTIES:

100% INSECT-BASED MONOPROTEIN DIET
FORMULATION FREE OF GLUTEN, CHICKEN
PROTEIN AND CHICKEN FAT

HIGH CONCENTRATION OF EPA AND DHA
OMEGA-3 FATTY ACIDS

PROBIOTIC CULTURE AND PREBIOTIC FIBRES

BENEFITS:

LOW RISK OF FOOD ALLERGIES AND INTOLERANCE TO COMMON PROTEINS

NO RISK OF ALLERGY/INTOLERANCE TO GLUTEN OR CHICKEN PROTEIN

STRENGTHENING OF THE NATURAL SKIN BARRIER AND IMMUNITY

SUPPORTS THE INTESTINAL MICROBIOME AND IMMUNE SYSTEM

METHOD OF USE:

INITIAL DIETARY TEST:

Only feed your dog the Brit VD Ultra-hypoallergenic Dog diet and water over a period of 3-8 weeks. Do not give your dog any other dog food, people food, treats, or supplements.

MAINTENANCE DIET:

In the case of positive response to the initial diet test, you may continue to feed your dog Brit VD Ultra-hypoallergenic Dog diet on a long-term basis.

FEEDING TABLE:

DOG'S WEIGHT (KG)	2	5	10	15	20	25	30	40	50	60	70	80
DAILY AMOUNT (G/DAY)	30	80	140	180	220	260	290	360	420	490	550	610

FEEDING GUIDELINES:

Consult the use of Brit VD dietetic food with your veterinarian. Food with high level of linoleic acid (LA) and sum of eicosapentaenoic acid (EPA) and docosahexaenoic acid (DHA). Serve the food dry or moistened with lukewarm water and use it for a period of 3-8 weeks, if signs intolerance disappear, this food can be used initially up to one year. In case of dermatosis and excessive loss of hair use initially up 2 months. Ensure your dog has access to fresh drinking water at all times.

GLUTEN & GRAIN-FREE VETERINARY DIET

INSECT & PEA

Composition: dehydrated insect (30%), yellow peas, dried apple pulp, coconut oil, pea protein, linseed (4%), calcium carbonate, dried algae (2.5%, Schizochytrium limacinum), pea flour, hydrolyzed yeasts (0.5% - a source of inositol and amino acids), yeast extract (source of mannan-oligosaccharides, 0.02%), β -glucans (0.02%), dried sea buckthorn (0.015%), fructo-oligosaccharides (0.013%), Mojave yucca (0.013%), Lactobacillus helveticus HA - 122 inactivated (15×10^9 cells/kg).

Metabolizable energy:	3,750 kcal/kg
Package sizes:	12 kg, 2 kg, 400 g

NUTRITIONAL PARAMETERS:

CRUDE PROTEIN	26%
CRUDE FAT	15%
CRUDE FIBRE	3.2%
CRUDE ASH	6.2%
MOISTURE	10%
OMEGA-3	1.5%
OMEGA-6	1.4%
EPA (20:5 N-3)	0.25%
DHA (22:6 N-3)	0.35%
LA	2.1%
CALCIUM	1.1%
PHOSPHORUS	0.7%
SODIUM	0.2%
MAGNESIUM	0.1%

NUTRITIONAL ADDITIVES PER 1 KG:

VITAMIN A (3A672A) 26,000 IU, VITAMIN D3 (3A671) 1,800 IU, VITAMIN E (3A700) 1,000 MG, VITAMIN C (3A312) 600 MG, CHOLINE CHLORIDE (3A890) 750 MG, BIOTIN (3A880) 3.5 MG, VITAMIN B1 (3A821) 2.5 MG, VITAMIN B2 (3A825I) 9.5 MG, NIACINAMIDE (3A315) 32 MG, CALCIUM-D-PANTOTHENATE (3A841) 25 MG, VITAMIN B6 (3A831) 2.5 MG, FOLIC ACID (3A316) 1.3 MG, VITAMIN B12 0.12 MG, ZINC (3B606) 150 MG, IRON (3B106) 90 MG, MANGANESE (3B504) 45 MG, IODINE (3B201) 0.85 MG, COPPER (3B406) 20 MG, SELENIUM (3B810) 0.2 MG, TAURINE (3A370) 2,000 MG.



Brit

GRAIN FREE
VETERINARY DIET



HYPOALLERGENIC

COMPLETE AND BALANCED HYPOALLERGENIC DIETARY FOOD FOR DOGS WITH DERMATOLOGIC AND GASTROINTESTINAL PROBLEMS CAUSED BY ADVERSE FOOD REACTIONS (FOOD ALLERGY/FOOD INTOLERANCE).

INDICATIONS:

- MITIGATION OF SKIN AND DIGESTIVE SYMPTOMS CAUSED BY FOOD ALLERGIES
- REDUCTION OF ATOPIC AND PRURITIC DERMATOSIS REACTIONS
- SUPPORTS THE HEALING OF INFLAMMATORY SKIN DISEASES
- STRENGTHENS THE FORMATION OF THE NATURAL SKIN BARRIER AND IMMUNITY



NUTRITIONAL PROPERTIES:

100% MONO PROTEIN DIET WITH SALMON
GLUTEN FREE, CHICKEN PROTEIN AND CHICKEN FAT
HIGH CONCENTRATION OF EPA & DHA OMEGA-3 ACIDS
LIVELY PROBIOTIC E. FAECIUM AND PREBIOTIC FIBRES

BENEFITS:

LOW RISK OF FOOD ALLERGIES AND INTOLERANCE TO COMMON PROTEINS
NO RISK OF ALLERGY/INTOLERANCE TO GLUTEN OR CHICKEN PROTEIN
ANTI-INFLAMMATORY EFFECTS, REDUCED ITCHINESS, AND SKIN BARRIER STIMULATION
SUPPORTS THE INTESTINAL MICROBIOME AND IMMUNE SYSTEM

METHOD OF USE:

ELIMINATIVE DIETARY TEST:

Only feed your dog the Brit VD Hypoallergenic Dog food and water over a period of 6-8 weeks. Do not give your dog any other dog food, people food, treats, or supplements.

MAINTENANCE DIET:

Should you see a positive response to the eliminative dietary test, you may continue to feed your dog Brit VD Hypoallergenic Dog food on a long-term basis

FEEDING TABLE:

DOG'S WEIGHT (KG)	2	5	10	15	20	25	30	40	50	60	70	80
DAILY AMOUNT (G)	30	75	130	170	210	250	280	350	410	470	530	590

FEEDING GUIDELINES:

Serve your dog the food dry or with lukewarm water over a period of 3-8 weeks. If your dog's intolerance and/or allergy goes away, you may continue to use the dog food with no time restriction. Ensure your dog has access to fresh drinking water at all times.

GRAIN FREE
VETERINARY DIET

SALMON
& PEA

Composition: dehydrated salmon(30%), yellow peas (25%), hydrolysed salmon protein(18%), buckwheat, coconut oil, apple pulp, salmon oil (3%), hydrolysed salmon gravy (2%), minerals, dried algae (0.5%, Ascophyllum nodosum),dried algae (0.4%, Schizochytrium limacinum), yeast extract (source of mannan-oligosaccharides, 0.02%), β-glucans(0.02%), sea buckthorn (0.015%), fructo-oligosaccharides (0.013%), Mojave yucca (0.013%) .

Metabolizable energy:	3,760 kcal/kg
Package sizes:	12kg & 2 kg

NUTRITIONAL PARAMETERS:

CRUDE PROTEIN	27%
FAT CONTENT	14%
CRUDE FIBRE	2%
CRUDE ASH	7.2%
MOISTURE	10%
OMEGA-3	1.2%
OMEGA-6%	0.85%
EPA (20:5 N-3)	0.3%
DHA (22:6 N-3)	0.4%
CALCIUM	1.2%
PHOSPHORUS	0.9%
SODIUM	0.5%
MAGNESIUM	0.1%

NUTRITIONAL ADDITIVES PER 1 KG:
VITAMIN A (3A672A) 26,000 I.U., VITAMIN D3 (E671) 1,800 I.U., VITAMIN E (3A700) 1,000 MG, VITAMIN C (3A312) 600 MG, CHOLINE CHLORIDE (3A890) 750 MG, BIOTIN (3A880) 3.5 MG, VITAMIN B1 (3A821) 2.5 MG, VITAMIN B2 9.5 MG, NIACINAMIDE (3A315) 32 MG, CALCIUM-D-PANTHOTHENATE (3A841) 25 MG, VITAMIN B6 (3A831) 2.5 MG, FOLIC ACID (3A316) 13 MG, VITAMIN B12 0.12 MG, ZINC CHELATE OF AMINO ACIDS HYDRATE (3B606) 150 MG, FERROUS CHELATE OF AMINO ACIDS HYDRATE (E1) 90 MG, MANGANESE CHELATE OF AMINO ACIDS HYDRATE (E5) 45 MG, POTASSIUM IODIDE (3B201) 0.85 MG, CUPRIC CHELATE OF AMINO ACIDS HYDRATE (E4) 20 MG, ORGANIC FORM OF SELENIUM PRODUCED BY SACCAROMYCES CEREVISIAE CNCM I-3060 (SELENISED YEAST INACTIVATED) (3B810) 0.2 MG, ENTEROCOCCUS FAECIUM DSM 10663/NCIMB 10415 1x109 CFU



Brit

GRAIN FREE
VETERINARY DIET



HYPOALLERGENIC

COMPLETE AND BALANCED HYPOALLERGENIC DIETARY FOOD FOR DOGS SUFFERING WITH DERMATOLOGIC AND GASTROINTESTINAL PROBLEMS CAUSED BY ADVERSE FOOD REACTIONS (FOOD ALLERGY/FOOD INTOLERANCE).

INDICATIONS:

- MITIGATION OF SKIN AND DIGESTIVE SYMPTOMS CAUSED BY FOOD ALLERGIES
- REDUCTION OF ATOPIC AND PRURITIC DERMATOSIS REACTIONS
- SUPPORTS THE HEALING OF INFLAMMATORY SKIN DISEASES
- STRENGTHENS THE FORMATION OF THE NATURAL SKIN BARRIER AND IMMUNITY



NUTRITIONAL PROPERTIES:

100% MONO PROTEIN DIET WITH SALMON
GLUTEN FREE, CHICKEN PROTEIN AND CHICKEN FAT
HIGH CONCENTRATION OF EPA & DHA OMEGA-3 ACIDS
MOJAVE YUCCA AND SEA BUCKTHORN

BENEFITS:

LOW RISK OF FOOD ALLERGIES AND INTOLERANCE TO COMMON PROTEINS
NO RISK OF ALLERGY/INTOLERANCE TO GLUTEN OR CHICKEN PROTEIN
ANTI-INFLAMMATORY EFFECTS, REDUCED ITCHINESS, AND SKIN BARRIER STIMULATION
ANTI-INFLAMMATORY EFFECTS AND ANTI-OXIDATIVE TISSUE PROTECTION

METHOD OF USE:

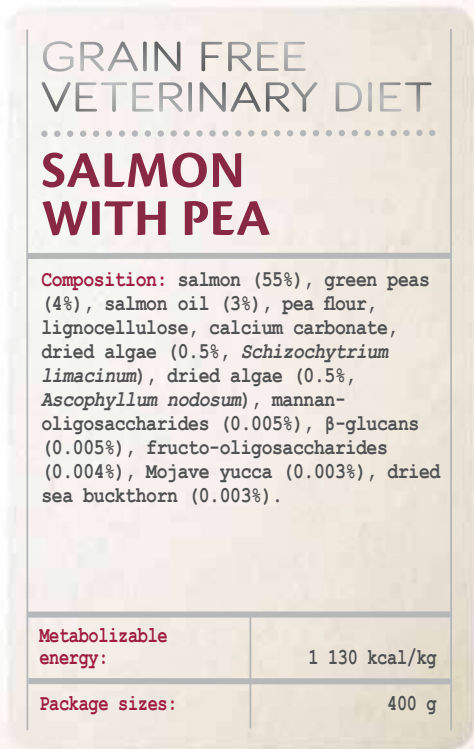
Consult with your veterinarian about feeding your dog Brit VD – if combined with Brit VD Dog Grain Free Hypoallergenic, adequately reduce the amount given. Serve the food to your dog over a period of 3-8 weeks. If your dog's intolerance or allergy recedes, you may continue to serve them the food as long as needed. Ensure your dog has access to fresh drinking water at all times.

FEEDING TABLE:

DOG'S WEIGHT (KG)	5-10	10-30	30-60
DAILY AMOUNT (G)	200-400	400-1000	1000-1600

FEEDING GUIDELINES:

Consult with your veterinarian before feeding your dog a Brit VD diet – if combined with Brit VD Dog Grain Free Hypoallergenic, adequately reduce the amount given. Serve your dog the food dry or with lukewarm water over a period of 3-8 weeks. If your dog's intolerance and/or allergy goes away, you may continue to use the dog food with no time restriction. We then recommend following the advice given to you by a veterinarian on the extended use of the food. Ensure your dog has access to fresh drinking water at all times. Store in a dry and cool place. Once open, store the can in a refrigerator and use all of it within 2 days. Expiration date and batch number located on the bottom of the packaging.



ANALYTICAL COMPONENTS:

CRUDE PROTEIN	8.0 %
CRUDE FAT	8.0 %
CRUDE ASH	2.5%
MOISTURE	78.0 %
CRUDE FIBRE	1.0%
CALCIUM	0.2%
PHOSPHORUS	0.3%
SODIUM	0.25%
EPA (20:5 N-3)	0.01 %
DHA (22:6 N-3)	0.15%
MAGNESIUM	0.1%
OMEGA 3	0.3%
OMEGA 6	0.2%

NUTRITIONAL ADDITIVES PER 1 KG:
VITAMIN A (3A672A) 5,000 IU, VITAMIN D3 (3A671) 400 IU, VITAMIN E (3A700) 200 MG, VITAMIN C (3A312) 150 MG, BIOTIN (3A880) 0.8 MG, ZINC (3B606) 35 MG, IRON (3B106) 20 MG, MANGANESE (3B504) 12 MG, POTASSIUM IODIDE 3B201) 0.2 MG, COPPER (3B406) 5 MG, SELENIUM (3B810) 0.05 MG TECHNOLOGICAL ADDITIVES PER 1 KG:
CAROB RUBBER (E 410) 5,000 MG.



Brit

GRAIN FREE
VETERINARY DIET



GASTROINTESTINAL

COMPLETE AND BALANCED DIETARY FOOD
FOR DOGS WITH GASTROINTESTINAL PROBLEMS

INDICATIONS:

- REDUCTION OF DIGESTIVE ISSUES IN ACUTE GASTROENTERITIS
- SUPPORTS THE HEALING OF CHRONIC GASTROENTERITIS (IBD)
- SUITABLE DIET FOR DOGS SUFFERING WITH EXOCRINE PANCREATIC INSUFFICIENCY
- IMPROVES STOOL QUALITY AND LIMITS FLATULENCE



NUTRITIONAL PROPERTIES:

EASILY DIGESTIBLE DIETARY SALMON AND HERRING PROTEINS

GLUTEN FREE INGREDIENTS

LIVELY PROBIOTIC E. FAECIUM AND PREBIOTIC FIBRES

BALANCED RATIO OF SOLUBLE AND INSOLUBLE FIBRES

BENEFITS:

EASILY DIGESTIBLE PROTEINS WITH A HIGH BIOLOGICAL VALUE

NO RISK OF ALLERGY TO GLUTEN OR GLUTEN ENTEROPATHY

SUPPORTS THE INTESTINAL MICROBIOME AND IMMUNE SYSTEM

SUPPORTS INTESTINAL MOTILITY, ABSORPTION, AND THE INTEGRITY OF THE INTESTINAL MUCOSA

METHOD OF USE:

ACUTE GASTROINTESTINAL ISSUES:

In case of an acute intestinal absorption disorder, only feed your dog Brit VD Gastrointestinal Dog food and water over a period of 1–3 weeks.

CHRONIC GASTROINTESTINAL ISSUES:

In case of issues with digestion, feed your dog Brit VD Gastrointestinal Dog food for a period of 3-12 weeks. In case of chronic gastrointestinal issues, continue to feed you dog Brit VD Gastrointestinal Dog on a long-term basis

FEEDING TABLE:

DOG'S WEIGHT (KG)	2	5	10	15	20	25	30	40	50	60	70	80
DAILY AMOUNT (G)	30	70	120	160	200	240	270	340	400	460	510	570

FEEDING GUIDELINES:

Serve your dog the food dry or with lukewarm water. Break up your dog's daily amount of food and serve them smaller portions throughout the day. Ensure your dog has access to fresh drinking water at all times.

GRAIN FREE
VETERINARY DIET

HERRING
& PEA

Composition: dehydrated herring (26%), yellow peas (23%), buckwheat, hydrolysed salmon protein (12%), chicken fat (10%), apple pulp, eggs (2%), salmon oil (2%), hydrolysed salmon gravy (2%), brewer's yeast (1%), minerals, psyllium husks and seeds (0.5%), dried algae (0.5%, *Ascophyllum nodosum*), egg shells (a source of calcium), yeast extract (source of mannan-oligosaccharides, 0.025%), β-glucans (0.022%), fructo-oligosaccharides (0.02%), Mojave yucca (0.02%), sea buckthorn (0.015%).

Metabolizable energy:	3,930 kcal/kg
Package sizes:	12kg & 2 kg

NUTRITIONAL PARAMETERS:

CRUDE PROTEIN	25.0%
FAT CONTENT	16.0%
CRUDE FIBRE	1.5%
CRUDE ASH	5.8%
MOISTURE	10%
OMEGA-3	0.85%
OMEGA-6	2.2%
CALCIUM	0.9%
PHOSPHORUS	0.6%
SODIUM	0.5%
MAGNESIUM	0.09%
POTASSIUM	0.5%

NUTRITIONAL ADDITIVES PER 1 KG:

VITAMIN A (3A672A) 22,000 IU, VITAMIN D3 (E671) 1,000 IU, VITAMIN E (3A700) 1,000 MG, VITAMIN C (3A312) 500 MG, CHOLINE CHLORIDE (3A890) 2,300 MG, BIOTIN (3A880) 2.4 MG, VITAMIN B1 (3A821) 11 MG, VITAMIN B2 14 MG, NIACINAMIDE (3A315) 94 MG, CALCIUM-D-PANTOTHENATE (3A841) 25 MG, VITAMIN B6 (3A831) 7 MG, FOLIC ACID (3A316) 2.4 MG, VITAMIN B12 0.16 MG, ZINC CHELATE OF AMINO ACIDS HYDRATE (3B606) 140 MG, FERROUS CHELATE OF AMINO ACIDS HYDRATE (E1) 65 MG, MANGANESE CHELATE OF AMINO ACIDS HYDRATE (E5) 75 MG, POTASSIUM IODIDE (3B201) 4.2 MG, CUPRIC CHELATE OF AMINO ACIDS HYDRATE (E4) 5 MG, ORGANIC FORM OF SELENIUM PRODUCED BY SACCHAROMYCES CEREVISAE CNCM I-3060, (SELENISED YEAST INACTIVATED) (3B810) 0.2 MG, L-CARNITINE (3A910) 350 MG, ENTEROCOCCUS FAECIUM DSM 10663/NCIMB 10415 1x10⁹ CFU



Brit

GRAIN FREE
VETERINARY DIET



GASTROINTESTINAL

COMPLETE AND BALANCED DIETARY FOOD FOR DOGS WITH
DIGESTIVE TRACT DISORDERS

INDICATIONS:

- REDUCTION OF DIGESTIVE ISSUES IN ACUTE GASTROENTERITIS
- SUPPORTS THE HEALING OF CHRONIC GASTROENTERITIS (IBD)
- SUITABLE DIET FOR DOGS SUFFERING WITH EXOCRINE PANCREATIC INSUFFICIENCY
- IMPROVES STOOL QUALITY AND LIMITS FLATULENCE



NUTRITIONAL PROPERTIES:

EASILY DIGESTIBLE DIETARY SALMON AND HERRING PROTEINS

GLUTEN FREE INGREDIENTS

MOJAVE YUCCA AND SEA BUCKTHORN

BALANCED RATIO OF SOLUBLE AND INSOLUBLE FIBRES

BENEFITS:

EASILY DIGESTIBLE PROTEINS WITH A HIGH BIOLOGICAL VALUE

NO RISK OF ALLERGY TO GLUTEN OR GLUTEN ENTEROPATHY

ANTI-INFLAMMATORY EFFECTS AND ANTI-OXIDATIVE TISSUE PROTECTION

SUPPORTS INTESTINAL MOTILITY, ABSORPTION, AND THE INTEGRITY OF THE INTESTINAL MUCOSA

METHOD OF USE:

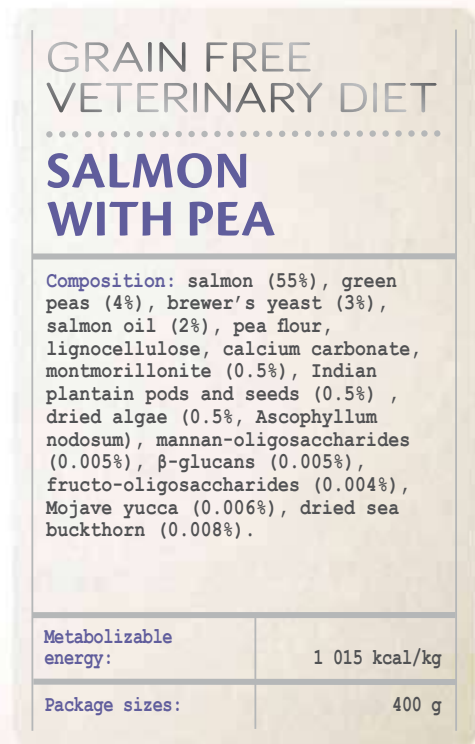
Consult with your veterinarian about feeding your dog Brit VD – if combined with Brit VD Dog Grain Free Gastrointestinal, adequately reduce the amount given. In case of acute intestinal resorption diseases, serve to your dog over a period of 1-2 weeks. In case of maldigestion, serve to your dog over a period of 3-12 weeks. In case of chronic pancreatic insufficiency, continue to serve your dog the food for their entire life. Requesting an opinion from your veterinarian is recommended before serving the food to your dog, or before extending the period in which the food will be served. Ensure your dog has access to fresh drinking water at all times.

FEEDING TABLE:

DOG'S WEIGHT (KG)	5-10	10-30	30-60
DAILY AMOUNT (G)	200-400	400-900	900-1500

FEEDING GUIDELINES:

Consult with your veterinarian before feeding your dog a Brit VD diet – if combined with Brit VD Dog Grain Free Gastrointestinal, adequately reduce the amount given. In case of acute intestinal resorption diseases, serve to your dog over a period of 1-2 weeks. In case of digestive issues, serve to your dog over a period of 3-12 weeks. In case of chronic pancreatic disorders, serve to your dog over the course of their entire life. We then recommend following the advice given to you by a veterinarian on the extended use of the food. Ensure your dog has access to fresh drinking water at all times. Store in a dry and cool place. Once open, store the can in a refrigerator and use all of it within 2 days. Expiration date and batch number located on the bottom of the packaging.



ANALYTICAL COMPONENTS:

CRUDE PROTEIN	8.0 %
CRUDE FAT	6.0 %
CRUDE ASH	3.0 %
MOISTURE	78.0 %
CRUDE FIBRE	1.0 %
CALCIUM	0.2 %
PHOSPHORUS	0.3 %
SODIUM	0.2 %
MAGNESIUM	0.07 %
POTASSIUM	0.3 %
OMEGA 3	0.2 %
OMEGA 6	0.2 %

NUTRITIONAL ADDITIVES PER 1 KG:

VITAMIN A (3A672A) 5,000 IU, VITAMIN D3 (3A671) 200 IU, VITAMIN E (3A700) 250 MG, VITAMIN C (3A312) 80 MG, BIOTIN (3A880) 0.5 MG, ZINC (3B606) 30 MG, IRON (3B106) 15 MG, MANGAN (3B504) 18 MG, POTASSIUM IODIDE (3B201) 1.0 MG, COPPER (3B406) 1.2 MG, SELENIUM (3B810) 0.05 MG, L-CARNITINE (3A910) 80 MG, TAURINE (3A370) 500 MG, SODIUM GLUTAMATE (2B621) 3,000 MG, L-ARGININ (3C3.6.1) 1,000 MG.

TECHNOLOGICAL ADDITIVES PER 1 KG: CAROB RUBBER (E 410) 5,000 MG.



Brit

GLUTEN & GRAIN-FREE
VETERINARY DIET



GASTROINTESTINAL-LOW FAT

COMPLETE DIETETIC FOOD FOR DOGS WITH LIPID ABSORPTION DISORDER,
PROTEIN LOSING ENTEROPATHY, AND PANCREATITIS

INDICATIONS:

- REDUCES SYMPTOMS OF PROTEIN LOSING ENTEROPATHY
- NUTRITIONAL SUPPORT DURING PANCREATITIS
- ~~DIET SUITABLE FOR DOGS SUFFERING WITH TRIADITIS~~



NUTRITIONAL PROPERTIES:

EASILY DIGESTIBLE DIETARY HERRING AND SALMON PROTEIN WITH A LOW FAT CONTENT

CONTROLLED LOW FAT CONCENTRATION

FORMULATION FREE OF GLUTEN, CHICKEN PROTEIN AND CHICKEN FAT

PROBIOTIC CULTURE AND PREBIOTIC FIBRES

BENEFITS:

EASILY DIGESTIBLE PROTEINS OF HIGH BIOLOGICAL VALUE AND LOW FAT CONTENT

REDUCES SYMPTOMS OF PROTEIN LOSING ENTEROPATHY, PANCREATITIS AND EXOCRINE PANCREATIC INSUFFICIENCY

NO RISK OF ALLERGY/INTOLERANCE TO GLUTEN OR CHICKEN PROTEIN

SUPPORTS THE INTESTINAL MICROBIOME AND IMMUNE SYSTEM

METHOD OF USE:

CHRONIC GASTROINTESTINAL DISORDERS:

In case of lipid absorption disorder, protein-losing enteropathy, and pancreatitis feed your dog Brit VD Gastrointestinal - Low-Fat Dog diet for an initial period up to 12 weeks. In case of positive response, continue to use it on a long-term basis.

FEEDING TABLE:

DOG'S WEIGHT (KG)	2	5	10	15	20	25	30	40	50	60	70	80
DAILY AMOUNT - WEIGHT LOSS (G)	30	70	120	160	200	230	270	330	390	450	500	560
DAILY AMOUNT - WEIGHT MAINTENANCE (G)	40	90	140	190	230	270	310	390	450	520	590	650

FEEDING GUIDELINES:

Consult the use of Brit VD dietetic food with your veterinarian. Higly digestible food. Serve the food dry or moistened with lukewarm water for reduction of intestinal absorptive disorders: up to 12 weeks. In the case of maldigestion initially up to 12 weeks and life time in the case of chronic pancreatic insufficiency. It is recommended that a veterinarian´s opinion be sought before use or before extending the period of use in all cases. The daily amount of food should be divided into smaller portions and served throughout the day. Ensure your dog has access to fresh drinking water at all times.

GLUTEN & GRAIN-FREE
VETERINARY DIET

HERRING
& PEA

Composition: yellow peas (35%), dehydrated herring (20%), buckwheat, hydrolysed salmon protein (12%), dried apple pulp, salmon oil (3%), eggs (2%), hydrolysed salmon gravy (2%), egg shells (a source of calcium), psyllium husks and seeds (1%), brewer´s yeast (1%), sodium chloride, pea flour, dried algae (0.5%, Ascophyllum nodosum), potassium chloride, yeast extract (source of mannan-oligosaccharides, 0.025%), β-glucans (0.022%), fructo-oligosaccharides (0.02%), Mojave yucca (0.02%), dried sea buckthorn (0.015%), Lactobacillus helveticus HA - 122 inactivated (15x10⁹ cells/kg) .

Metabolizable energy:	3,515 kcal/kg
Package sizes:	12 kg, 2 kg, 400 g

NUTRITIONAL PARAMETERS:

CRUDE PROTEIN	24.0%
CRUDE FAT	7.0%
CRUDE FIBRE	1.5%
CRUDE ASH	5.3%
MOISTURE	10.0%
TOTAL SUGARS	52.2%
OMEGA-3	1.3%
OMEGA-6	0.6%
CALCIUM	0.9%
PHOSPHORUS	0.6%
SODIUM	0.5%
MAGNESIUM	0.09%
POTASSIUM	0.7%

NUTRITIONAL ADDITIVES PER 1 KG:
VITAMIN A (3A672A) 22,000 IU, VITAMIN D3 (3A671) 1,000 IU, VITAMIN E (3A700) 1,000 MG, VITAMIN C (3A312) 500 MG, CHOLINE CHLORIDE (3A890) 2,300 MG, BIOTIN (3A880) 2.4 MG, VITAMIN B1 (3A821) 11 MG, VITAMIN B2 (3A825I) 14 MG, NIACINAMIDE (3A315) 94 MG, CALCIUM-D-PANTOTHENATE (3A841) 25 MG, VITAMIN B6 (3A831) 7 MG, FOLIC ACID (3A316) 2.4 MG, VITAMIN B12 0.16 MG, ZINC (3B606) 140 MG, IRON (3B106) 65 MG, MANGANESE (3B504) 75 MG, IODINE (3B201) 4.2 MG, COPPER (3B406) 5 MG, SELENIUM (3B810) 0.2 MG, L-CARNITINE (3A910) 350 MG, TAURINE (3A370) 2,000 MG.



Brit

GLUTEN & GRAIN-FREE
VETERINARY CARE



VEG HIGH FIBRE

COMPLEMENTARY
FOOD

**HIGH FIBRE COMPLEMENTARY DOG FOOD FOR FIBRE RESPONSIVE
DISORDERS AND WEIGHT MANAGEMENT**

INDICATIONS:

- WEIGHT MANAGEMENT OF DOGS PRONE TO OBESITY
- FIBRE RESPONSIVE INTESTINAL DISORDERS
- SUPPORT OF GASTROINTESTINAL MICROBIOM



NUTRITIONAL PROPERTIES:

HIGH CONTENT OF DIETARY FIBRE WITH
BALANCED RATIO OF SOLUBLE AND INSOLUBLE
FIBRE

FORMULA FREE OF ANIMAL PROTEIN, FAT AND
GLUTEN WITH LIMITED ENERGY

PREBIOTIC FIBRES, MOJAVE YUCCA, AND MILK
THISTLE

BENEFITS:

NUTRITIONAL SUPPORT FOR DOGS SUFFERING FROM COLITIS
AND FIBRE-RESPONSIVE DIARRHOEA

NO RISK OF ALLERGY/INTOLERANCE TO ANIMAL PROTEIN AND GLUTEN

SUPPORTS THE INTESTINAL MICROBIOME AND IMMUNE SYSTEM

FEEDING TABLE:

DOG'S WEIGHT (KG)	2	5	10	15	20	25	30	40	50	60	70	80
DAILY AMOUNT (G/DAY)	5	15	25	30	40	45	50	65	75	85	100	110

FEEDING GUIDELINES:

Consult the daily serving size with your veterinarian in order to achieve the desired target. Decrease the daily serving size of complete food by the recommended amount and mix with Veg High Fibre.

GLUTEN & GRAIN-FREE
VETERINARY CARE

PEA WITH APPLE
& COCONUT OIL

Composition: yellow peas, pea protein, dried apple pulp, coconut oil, lignocellulose, linseed (5%), red lentils, hydrolysed yeast, psyllium husk & seeds (2%), milkt thistle seed (1%), Mojave yucca (1%), dried olive pulp (1%), dried kelp (Ascophyllum nodosum), mannan-oligosaccharides (0.5%), dried algae (0.5%, Schizochytrium limacinum).

Metabolizable energy:	3,200 kcal/kg
Package sizes:	2 kg, 400 g

NUTRITIONAL PARAMETERS:	
CRUDE PROTEIN	15.0%
CRUDE FAT	10.0%
CRUDE FIBRE	10.0%
CRUDE ASH	2.4%
MOISTURE	10.0%
OMEGA-3	1.0%
OMEGA-6	0.3%
EPA	0.1%
DHA	0.15%
CALCIUM	0.1%
PHOSPHORUS	0.2%



Brit

GRAIN FREE
VETERINARY DIET



JOINT & MOBILITY

COMPLETE AND BALANCED DIETARY FOOD
FOR DOGS WITH JOINT DISEASES

INDICATIONS:

- DEGENERATIVE JOINT DISEASE (OSTEOARTHRITIS)
- POST ORTHOPAEDIC DISEASE REHABILITATION
- DIET SUITABLE FOR DOGS WITH A PREDISPOSITION TO DYSPLASIA
- SUPPORTS THE JOINTS OF OVERWEIGHT AND OBESE DOGS



NUTRITIONAL PROPERTIES:

HIGH CONCENTRATION OF EPA & DHA OMEGA-3 ACIDS

GLUCOSAMINE, CHONDROITIN & PTERNA CANALICULUS

MSM, BOSWELLIA SERRATA & MOJAVE YUCCA EXTRACT

GLUTEN FREE INGREDIENTS WITH LOW GLYCAEMIC INDEX GRAINS

BENEFITS:

ANTI-INFLAMMATORY EFFECTS AND SUPPRESSES THE PRODUCTION OF ENZYMES HARMFUL TO CARTILAGE

SUPPORTS NOURISHMENT, THE METABOLISM, AND THE REGENERATION OF JOINT CARTILAGE

ANTI-INFLAMMATORY EFFECTS AND RELIEF FROM JOINT PAIN

NO RISK OF ALLERGY TO GLUTEN, AND LOW GLYCAEMIC INDEX

METHOD OF USE:

INITIAL FEEDING PERIOD:

Start by feeding your dog Brit VD Joint & Mobility Dog over a period of up to 6 months. You can expect to see the maximum effects of Brit VD Joint & Mobility Dog come during the first 2 months. In case of acute osteoarthritis or mobility problems, administer painkillers.

MAINTENANCE DIET:

Should the results be positive, you may continue to feed your dog Brit VD Joint & Mobility over a long-term basis.

FEEDING TABLE:

DOG'S WEIGHT (KG)	2	5	10	15	20	25	30	40	50	60	70	80
DAILY AMOUNT (G)	30	75	130	170	210	250	290	360	420	480	540	600

FEEDING GUIDELINES:

Serve your dog the food dry or with lukewarm water for up to 6 weeks. The dog food is also suitable for use on a long-term basis. Ensure your dog has access to fresh drinking water at all times.

GRAIN FREE
VETERINARY DIET

HERRING
& PEA

Composition: dehydrated herring (28%), yellow peas (24%), hydrolysed salmon protein(10%), buckwheat, apple pulp, flaxseed (6%), chicken fat (5%),collagen (3%, type I, hydrolysed), salmon oil (3 %), hydrolysed chicken liver (2%), minerals, dried algae (0.5%, Ascophyllum nodosum), dried algae (0.4%, Schizochytrium limacinum), hydrolysed crustacean shells (a source of glucosamine sulphate 0.15%), hydrolysed cartilage (a source of chondroitin sulphate, 0.12%), methyl sulphonyl methane (0.02%), yeast extract (source of mannan-oligosaccharides, 0.02%), β-glucans (0.02%), egg shell membrane (0,015%), sea buckthorn (0.015%), fructo-oligosaccharides (0.013%), Boswellia serrata (0.013 mg/kg), Mojave yucca (0.012%), green-lipped mussel extract (Perna canaliculus, 0.01%).

Metabolizable energy:	3,720 kcal/kg
Package sizes:	12kg & 2 kg

NUTRITIONAL PARAMETERS:

CRUDE PROTEIN	29.0%
FAT CONTENT	13.0%
CRUDE FIBRE	2.5%
CRUDE ASH	6.0%
MOISTURE	10%
OMEGA-3	3.3%
OMEGA-6	1.9%
EPA (20:5 N-3)	0.40%
DHA (22:6 N-3)	0.55%
CALCIUM	0.8%
PHOSPHORUS	0.6%
SODIUM	0.6%
MAGNESIUM	0.08%
VITAMIN E	500 MG/KG

NUTRITIONAL ADDITIVES PER 1 KG:

VITAMIN A (3A672A) 22,000 IU, VITAMIN D3 (E671) 1,800 IU, VITAMIN E (3A700) 500 MG, VITAMIN C (3A312) 500 MG, CHOLINE CHLORIDE (3A890) 650 MG, BIOTIN (3A880) 0.8 MG, VITAMIN B1 (3A821) 6.5 MG, VITAMIN B2 8.4 MG, NIACINAMIDE (3A315) 38 MG, CALCIUM-D-PANTHOTHENATE (3A841) 19 MG, VITAMIN B6 (3A831) 6.5 MG, FOLIC ACID (3A316) 0.9 MG, VITAMIN B12 0.05 MG, ZINC CHELATE OF AMINO ACIDS HYDRATE (3B606) 120 MG, FERROUS CHELATE OF AMINO ACIDS HYDRATE (E1) 90 MG, MANGANESE CHELATE OF AMINO ACIDS HYDRATE (E5) 45 MG, POTASSIUM IODIDE (3B201) 0.8 MG, CUPRIC CHELATE OF AMINO ACIDS HYDRATE (E4) 20 MG, ORGANIC FORM OF SELENIUM PRODUCED BY SACCAROMYCES CEREVISIAE CNCM I-3060 (SELENISED YEAST INACTIVATED) (3B810) 0.2 MG, L-CARNITINE (3A910) 500 MG, ENTEROCOCCUS FAECIUM DSM 10663/NCIMB 10415 1x109 CFU



Brit

GRAIN FREE
VETERINARY DIET



JOINT & MOBILITY

COMPLETE AND BALANCED DIETARY FOOD FOR DOGS WITH
JOINT DISEASES

INDICATIONS:

- DEGENERATIVE JOINT DISEASE (OSTEOARTHRITIS)
- POST ORTHOPAEDIC DISEASE REHABILITATION
- DIET SUITABLE FOR DOGS WITH A PREDISPOSITION TO DYSPLASIA
- SUPPORTS THE JOINTS OF OVERWEIGHT AND OBESE DOGS



NUTRITIONAL PROPERTIES:

HIGH CONCENTRATION OF EPA & DHA OMEGA-3 ACIDS

GLUCOSAMINE, CHONDROITIN & PERNAL CANALICULUS

MSM, BOSWELLIA SERRATA & MOJAVE YUCCA EXTRACT

GLUTEN FREE INGREDIENTS WITH LOW GLYCAEMIC INDEX GRAINS

BENEFITS:

ANTI-INFLAMMATORY EFFECTS AND SUPPRESSES THE PRODUCTION OF ENZYMES HARMFUL TO CARTILAGE

SUPPORTS NOURISHMENT, THE METABOLISM, AND THE REGENERATION OF JOINT CARTILAGE

ANTI-INFLAMMATORY EFFECTS AND RELIEF FROM JOINT PAIN

NO RISK OF ALLERGY TO GLUTEN, AND LOW GLYCAEMIC INDEX

METHOD OF USE:

Consult with your veterinarian about feeding your dog Brit VD – if combined with Brit VD Dog Grain Free Joint & Mobility, adequately reduce the amount given. Serve the food to your dog over a period of 6 months. The dog food is also suitable for use on a long-term basis, however, you should first consult with your veterinarian. Ensure your dog has access to fresh drinking water at all times.

FEEDING TABLE:

DOG'S WEIGHT (KG)	5-10	10-30	30-60
DAILY AMOUNT (G)	200-400	400-800	800-1300

FEEDING GUIDELINES:

Consult with your veterinarian before feeding your dog a Brit VD diet – if combined with Brit VD Dog Grain Free Joint & Mobility, adequately reduce the amount given. Initially, begin by serving your dog the food over a period of 6 months. We then recommend following the advice given to you by a veterinarian on the extended use of the food. This food is suitable for long-term use. Ensure your dog has access to fresh drinking water at all times. Store in a dry and cool place. Once open, store the can in a refrigerator and use all of it within 2 days. Expiration date and batch number located on the bottom of the packaging.

GRAIN FREE
VETERINARY DIET

HERRING
WITH PEA

Composition: herring (30%), turkey (25%), green peas (4%), salmon oil (2%), pea flour, collagen (1%, type I. hydrolysed), lignocellulose, calcium carbonate, dried algae (0.5%),Schizochytrium limacinum), dried algae (0.5%, Ascophyllum nodosum,glucosamine (0.03%), chondroitin sulfate(0.02%, methylsulfonylmethane (0.005%), mannan oligosaccharides (0.005%), fructo-oligosaccharides (0.003%), β-glucans(0.003%), Mojava yucca (0.003%), dried sea buckthorn (0.003%), Boswellia serrata (0.002%), New Zealand green mussel extract (Nana canaliculus, 0.002%) .

Metabolizable energy:	1 045 kcal/kg
Package sizes:	400 g

ANALYTICAL COMPONENTS:

CRUDE PROTEIN	10.0%
CRUDE FAT	6.0%
CRUDE ASH	2.5%
MOISTURE	78.0 %
CRUDE FIBRE	1.0%
CALCIUM	0.1%
PHOSPHORUS	0.2%
SODIUM	0.1%
MAGNESIUM	0.05 %
OMEGA 3	0.25%
OMEGA 6	0.3%
EPA (20:5 N-3)	0.01 %
DHA (22:6 N-3)	0.15%
VITAMIN E	150 MG/KG

NUTRITIONAL ADDITIVES PER 1 KG:

VITAMIN A (3A672A) 5,000 IU, VITAMIN D (3A671) 300 IU, VITAMIN E (3A700) 100 MG, VITAMIN C (3A312) 100 MG, BIOTIN (3A880) 0.2 MG, ZINC (3B606) 25 MG, IRON (3B106) 16 MG, MANGAN (3B504) 8 MG, POTASSIUM IODIDE (3B201) 0.2 MG, COPPER (3B406) 3.0 MG, SELENIUM (3B810) 0.05 MG, L-KARTININ (3A910) 100 MG.

TECHNOLOGICAL ADDITIVES PER 1 KG: CAROB RUBBER (E 410) 5,000 MG.



Brit

GRAIN FREE
VETERINARY DIET



O B E S I T Y

**COMPLETE AND BALANCED DIETARY DOG
FOOD FOR REDUCING EXCESSES
BODY WEIGHT AND WEIGHT MANAGEMENT**

INDICATIONS:

- SUPPORTS OVERWEIGHT AND OBESE DOGS TO LOSE WEIGHT
- MAINTAINS THE OPTIMAL BODY WEIGHT AND CONDITION
- DIET SUITABLE FOR OBESE DOGS WITH DIABETES MELLITUS
- RESOLVES COLITIS AND DIARRHOEIC REACTIONS TO FIBRE

CONTRAINDICATION:

- PUPPIES
- PREGNANT OR NURSING DOGS



NUTRITIONAL PROPERTIES:

GLUTEN FREE INGREDIENTS WITH LOW
GLYCAEMIC INDEX GRAINS

BALANCED RATIO OF SOLUBLE AND INSOLUBLE
FIBRES

LIVELY PROBIOTIC E. FAECIUM AND PREBIOTIC
FIBRES

L-CARNITINE, GLUCOSAMINE, CHONDROITIN &
MOJAVE YUCCA

BENEFITS:

NO RISK OF ALLERGY TO GLUTEN, AND LOW GLYCAEMIC INDEX

SUPPORTS THE FEELING OF FULLNESS AND SUPPRESSES THE DESIRE TO EAT

SUPPORTS THE INTESTINAL MICROBIOME AND IMMUNE SYSTEM

SUPPORTS MUSCLE MASS, PHYSICAL CONDITION, AND THE JOINT CARTILAGE
OF OBESE DOGS

METHOD OF USE:

REDUCTION OF EXCESS BODY WEIGHT:

Set a target weight for your dog according to their breed, and adjust the amount of Brit VD Obesity Dog you feed them per day, so that they lose 1-2% of their body weight per week. It is important to regularly inspect your dog's body weight to ensure a safe and effective weight-loss process. Start by feeding your dog Brit VD Obesity Dog over a period of at least 2 months. Do not feed your dog any other dog food, human food, or dog treats.

MAINTAINING OPTIMAL BODY WEIGHT:

Once the desired body weight has been achieved, feed your dog the adjusted amount of Brit VD Obesity Dog for another 6 months, or on a long-term basis.

FEEDING TABLE:

DOG'S WEIGHT (KG)	2	5	10	15	20	25	30	40	50	60	70	80
DAILY AMOUNT - WEIGHT LOSS (G)	35	80	130	180	220	260	300	370	440	500	570	630
DAILY AMOUNT - WEIGHT MAINTENANCE (G)	40	90	150	200	250	300	340	430	500	580	650	720

FEEDING GUIDELINES:

Serve your dog the food dry or with lukewarm water, and continue to do so until their desired weight is reached. Ensure your dog has access to fresh drinking water at all times.

GRAIN FREE
VETERINARY DIET

LAMB
& PEA

Composition: dehydrated lamb (26%), yellow peas (25%), hydrolysed turkey protein (10%), bamboo lignocellulose (10%), apple pulp, yellow pea protein, hydrolysed lamb protein (5%), salmon oil (2%), hydrolysed chicken liver (2%), minerals, psyllium husks and seeds (0.8%), dried algae (0.5%, *Ascophyllum nodosum*), hydrolysed crustacean shells (a source of glucosamine sulphate 0.036%), hydrolysed cartilage (a source of chondroitin sulphate, 0.025%), yeast extract (source of mannan-oligosaccharides, 0.02%), β -glucans (0.02%), sea buckthorn (0.015%), fructo-oligosaccharides (0.013%), Mojave yucca (0.012%).

Metabolizable energy:	3,120 kcal/kg
Package sizes:	12kg & 2 kg

NUTRITIONAL PARAMETERS:

CRUDE PROTEIN	34.0%
FAT CONTENT	9.0%
CRUDE FIBRE	8.5%
CRUDE ASH	7.5%
MOISTURE	10%
OMEGA-3	0.55%
OMEGA-6	0.6%
CALCIUM	1.5%
PHOSPHORUS	1.2%
SODIUM	0.3%
MAGNESIUM	0.05%

NUTRITIONAL ADDITIVES PER 1 KG:

VITAMIN A (3A672A) 21,000 IU, VITAMIN D3 (E671) 1,100 IU, VITAMIN E (3A700) 1,200 MG, VITAMIN C (3A312) 500 MG, CHOLINE CHLORIDE (3A890) 2,500 MG, BIOTIN (3A880) 2.6 MG, VITAMIN B1 (3A821) 12 MG, VITAMIN B2 10 MG, NIACINAMIDE (3A315) 60 MG, CALCIUM-D-PANTHOTHENATE (3A841) 25 MG, VITAMIN B6 (3A831) 8 MG, FOLIC ACID (3A316) 5 MG, VITAMIN B12 0.18 MG, ZINC CHELATE OF AMINO ACIDS HYDRATE (3B606) 140 MG, FERROUS CHELATE OF AMINO ACIDS HYDRATE (E1) 48 MG, MANGANESE CHELATE OF AMINO ACIDS HYDRATE (E5) 65 MG, POTASSIUM IODIDE (3B201) 3.7 MG, CUPRIC CHELATE OF AMINO ACIDS HYDRATE (E4) 5 MG, ORGANIC FORM OF SELENIUM PRODUCED BY SACCAROMYCES CEREVISIAE CNCM I-3060 (SELENISED YEAST INACTIVATED) (3B810) 0.2 MG, TAURINE (3A370) 2,500 MG, L-CARNITINE (3A910) 630 MG, ENTEROCOCCUS FAECIUM DSM 10663/ NCIMB 10415 1x109 CFU.



Brit

GRAIN FREE VETERINARY DIET



O B E S I T Y

**COMPLETE AND BALANCED DIETARY DOG FOOD FOR
REDUCING EXCESSES BODY WEIGHT AND WEIGHT MANAGEMENT**

INDICATIONS:

- SUPPORTS OVERWEIGHT AND OBESE DOGS TO LOSE WEIGHT
- MAINTAINS THE OPTIMAL BODY WEIGHT AND CONDITION
- DIET SUITABLE FOR OBESE DOGS WITH DIABETES MELLITUS
- RESOLVES COLITIS AND DIARRHOEIC REACTIONS TO FIBRE

CONTRAINDICATION:

- PUPPIES
- PREGNANT OR NURSING DOGS



NUTRITIONAL PROPERTIES:

GLUTEN FREE INGREDIENTS WITH LOW
GLYCAEMIC INDEX GRAINS

BALANCED RATIO OF SOLUBLE AND INSOLUBLE
FIBRES

MOJAVE YUCCA AND SEA BUCKTHORN

L-CARNITINE, GLUCOSAMINE, CHONDROITIN

BENEFITS:

NO RISK OF ALLERGY TO GLUTEN, AND LOW GLYCAEMIC INDEX

SUPPORTS THE FEELING OF FULLNESS AND SUPPRESSES THE DESIRE TO EAT

ANTI-INFLAMMATORY EFFECTS AND ANTI-OXIDATIVE TISSUE PROTECTION

SUPPORTS MUSCLE MASS, PHYSICAL CONDITION, AND THE JOINT CARTILAGE OF
OBESE DOGS

METHOD OF USE:

Consult with your veterinarian about feeding your dog Brit VD – if combined with Brit VD Dog Grain Free Obesity, adequately reduce the amount given. Serve your dog the food over a period of up to 6 months. Requesting an opinion from your veterinarian is recommended before serving the food to your dog, or before extending the period in which the food will be served. Your dog's physical condition and weight must be regularly examined by a veterinarian. Ensure your dog has access to fresh drinking water at all times.

FEEDING TABLE:

DOG'S WEIGHT (KG)	2	5	10	15	20	25	30	40	50	60	70	80
DAILY AMOUNT - WEIGHT LOSS (G)	35	80	130	180	220	260	300	370	440	500	570	630
DAILY AMOUNT - WEIGHT MAINTENANCE (G)	40	90	150	200	250	300	340	430	500	580	650	720

FEEDING GUIDELINES:

Consult with your veterinarian before feeding your dog a Brit VD diet – if combined with Brit VD Dog Grain Free Obesity, adequately reduce the amount given. Initially, serve your dog the food over a period of 6 months, or, for obese dogs, continue to serve the food until the desired weight loss is achieved. We then recommend following the advice given to you by a veterinarian on the extended use of the food. Ensure your dog has access to fresh drinking water at all times. Store in a dry and cool place. Once open, store the can in a refrigerator and use all of it within 2 days. Expiration date and batch number located on the bottom of the packaging.

GRAIN FREE
VETERINARY DIET

LAMB
WITH PEA

Composition: lamb (55%), green peas (4%), salmon oil (2%), lignocellulose (2%), pea flour, calcium carbonate, Indian plantain pods and seeds (0.5%), dried algae (0.5%, *Ascophyllum nodosum*), glucosamine (0.018%), chondroitin sulfate (0.013%), mannan oligosaccharides (0.01%), β-glucans (0.01%), fructooligosaccharides (0.008%), Mojave yucca (0.006%), dried sea buckthorn (0.008%) .

Metabolizable energy:	1 030 kcal/kg
Package sizes:	400 g

ANALYTICAL COMPONENTS:	
CRUDE PROTEIN	8.0 %
CRUDE FAT	7.0%
CRUDE ASH	2.0 %
MOISTURE	78.0 %
TOTAL SUGAR (NFE)	2.5%
CRUDE FIBRE	4.5%
CALCIUM	0.1%
PHOSPHORUS	0.2%
SODIUM	0.1%
STARCH	2%
TOTAL SUGAR	1%
MAGNESIUM	0.08%
OMEGA 3	0.1%
OMEGA 6	0.2%

NUTRITIONAL ADDITIVES PER 1 KG:
VITAMIN A (3A672A) 5,000 IU, VITAMIN D3 (3A671) 300 IU, VITAMIN E (3A700) 300 MG, VITAMIN C (3A312) 150 MG, BIOTIN (3A880) 0.6 MG, ZINC (3B606) 40 MG, IRON (3B106) 15 MG, MANGAN (3B504) 15 MG, POTASSIUM IODIDE (3B201) 1.0 MG, COPPER (3B406) 1.5 MG, SELEN (3B810) 0.05 MG, TAURIN (3A370) 600 MG, L-CARTININ (3A910) 200 MG.
TECHNOLOGICAL ADDITIVES PER 1 KG: CAROB RUBBER (E 410) 5,000 MG.



Brit

GRAIN FREE
VETERINARY DIET



DIABETES

**COMPLETE AND BALANCED DIETARY FOOD
FOR DOGS SUFFERING WITH
DIABETES MELLITUS**

INDICATIONS:

- DIET SUITABLE FOR DOGS WITH DIABETES MELLITUS
- GLUCOSE CONTROL IN DOGS WITH PERSISTENT HYPERGLYCAEMIA
- HELPS REDUCE WEIGHT FOR DIABETIC DOGS
- RESOLVES COLITIS AND DIARRHOEIC REACTIONS TO FIBRE

CONTRAINDICATION:

- PUPPIES
- PREGNANT OR NURSING DOGS



NUTRITIONAL PROPERTIES:

GLUTEN FREE INGREDIENTS WITH LOW GLYCAEMIC INDEX GRAINS

EASILY DIGESTIBLE DIETARY PROTEIN & L-CARNITINE

BALANCED RATIO OF SOLUBLE AND INSOLUBLE FIBRES

LIVELY PROBIOTIC E. FAECIUM AND PREBIOTIC FIBRES

BENEFITS:

NO RISK OF ALLERGY TO GLUTEN, AND LOW GLYCAEMIC INDEX

EASILY DIGESTIBLE PROTEIN FOR MAINTAINING MUSCLE MASS AND PHYSICAL CONDITION

STABILIZATION AND CONTROL OF POSTPRANDIAL HYPERGLYCAEMIA

SUPPORTS THE INTESTINAL MICROBIOME AND IMMUNE SYSTEM

METHOD OF USE:

INITIAL FEEDING PERIOD:

Start by feeding your dog Brit VD Diabetes Dog over a period of up to 6 months. Your dog's daily food amount must be split into 3 equal portions, and given in regular intervals depending on the health of your dog. Regular inspections of your dog's blood sugar are fundamentally important in determining the optimal amount of food to serve them. Do not feed your dog any other dog food, human food, or dog treats.

MAINTENANCE DIET:

The optimal weight of dogs with diabetes increases their sensitivity to insulin. For the effective treatment of diabetes, it is important to regularly inspect your dog's body weight.

FEEDING TABLE:

DOG'S WEIGHT (KG)	2	5	10	15	20	25	30	40	50	60	70	80
DAILY AMOUNT (G)	35	85	140	190	230	280	320	400	460	530	600	660

FEEDING GUIDELINES:

Feed your dog before administering their insulin injection: split your dog's daily amount of food into 3 equal portions and serve them at regular intervals. Serve your dog the food dry or with lukewarm water. Ensure your dog has access to fresh drinking water at all times.

GRAIN FREE
VETERINARY DIET

TURKEY
& PEA

Composition: dehydrated turkey (30%), yellow peas (18%), hydrolysed turkey protein (14%), dried apples, yellow pea protein, bamboo lignocellulose (5%), chicken fat (3%), salmon oil (2%), hydrolysed chicken liver (2%), minerals, psyllium husks and seeds (0.5%), dried algae (0.5%), Ascophyllum nodosum), sodium chloride, hydrolysed crustacean shells (a source of glucosamine sulphate, 0.035%), hydrolysed cartilage (a source of chondroitin sulphate, 0.023%), yeast extract(source of mannan-oligosaccharides, 0.018%), β-glucans (0.018%), sea buckthorn (0.015%), fructo- oligosaccharides (0.012%), Mojave yucca (0.012%) .

Metabolizable energy:	3,390 kcal/kg
Package sizes:	12kg & 2 kg

NUTRITIONAL PARAMETERS:

CRUDE PROTEIN	37.0%
FAT CONTENT	12.0%
CRUDE FIBRE	6.5%
CRUDE ASH	7.5%
MOISTURE	10%
OMEGA-3	0.5%
OMEGA-6	1.35%
CALCIUM	1.6%
PHOSPHORUS	1.2%
SODIUM	0.35%
MAGNESIUM	0.08%
STARCH	16%
TOTAL SUGAR	1.5%

NUTRITIONAL ADDITIVES PER 1 KG:
VITAMIN A (3A672A) 20,000 IU, VITAMIN D3 (E671) 1,000 IU, VITAMIN E (3A700) 1,000 MG, VITAMIN C (3A312) 500 MG, CHOLINE CHLORIDE (3A890) 2,300 MG, BIOTIN (3A880) 2.4 MG, VITAMIN B1 (3A821) 11 MG, VITAMIN B2 10 MG, NIACINAMIDE (3A315) 55 MG, CALCIUM-D-PANTHOTHENATE (3A841) 25 MG, VITAMIN B6 (3A831) 7 MG, FOLIC ACID (3A316) 5 MG, VITAMIN B12 0.17 MG, ZINC CHELATE OF AMINO ACIDS HYDRATE (3B606) 140 MG, FERROUS CHELATE OF AMINO ACIDS HYDRATE (E1) 45 MG, MANGANESE CHELATE OF AMINO ACIDS HYDRATE (E5) 60 MG, POTASSIUM IODIDE (3B201) 3.5 MG, CUPRIC CHELATE OF AMINO ACIDS HYDRATE (E4) 5 MG, ORGANIC FORM OF SELENIUM PRODUCED BY SACCAROMYCES CEREVISIAE CNCM I-3060 (SELENISED YEAST INACTIVATED) (3B810) 0.2 MG, TAURINE (3A370) 2,300 MG, L-CARNITINE (3A910) 500 MG, ENTEROCOCCUS FAECIUM DSM 10663/ NCIMB 10415 1x109 CFU



Brit

GRAIN FREE
VETERINARY DIET



DIABETES

**COMPLETE AND BALANCED DIETARY FOOD
FOR DOGS WITH DIABETES MELLITUS**

INDICATIONS:

- DIET SUITABLE FOR CATS WITH DIABETES MELLITUS
- GLUCOSE CONTROL IN CATS WITH PERSISTENT HYPERGLYCAEMIA
- HELPS REDUCE WEIGHT FOR DIABETIC CATS
- RESOLVES COLITIS AND DIARRHOEIC REACTIONS TO FIBRE

CONTRAINDICATION:

- PUPPIES
- PREGNANT OR NURSING DOGS



NUTRITIONAL PROPERTIES:

GLUTEN FREE INGREDIENTS WITH LOW GLYCAEMIC INDEX GRAINS

EASILY DIGESTIBLE DIETARY PROTEIN & L-CARNITINE

BALANCED RATIO OF SOLUBLE AND INSOLUBLE FIBRES

OMEGA-3 UNSATURATED FATTY ACIDS, MOJAVE YUCCA, AND SEA BUCKTHORN

BENEFITS:

NO RISK OF ALLERGY TO GLUTEN, AND LOW GLYCAEMIC INDEX

EASILY DIGESTIBLE PROTEIN FOR MAINTAINING MUSCLE MASS AND PHYSICAL CONDITION

STABILIZATION AND CONTROL OF POSTPRANDIAL HYPERGLYCAEMIA

ANTI-INFLAMMATORY EFFECTS AND ANTI-OXIDATIVE TISSUE PROTECTION

METHOD OF USE:

Consult with your veterinarian about feeding your dog Brit VD – if combined with Brit VD Dog Grain Free Diabetes. Serve your dog the food over a period of up to 6 months.

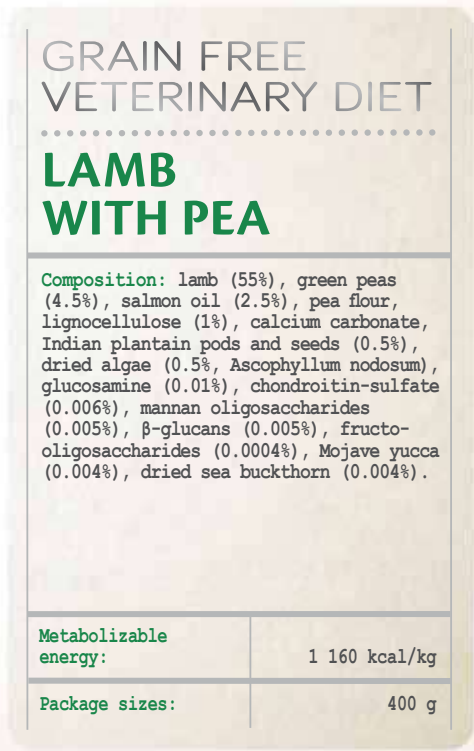
Requesting an opinion from your veterinarian is recommended before serving the food to your dog, or before extending the period in which the food will be served. Ensure your dog has access to fresh drinking water at all times.

FEEDING TABLE:

DOG'S WEIGHT (KG)	5-10	10-30	30-60
DAILY AMOUNT (G)	300-500	500-1200	1200-2000

FEEDING GUIDELINES:

Consult with your veterinarian before feeding your dog a Brit VD diet – if combined with Brit VD Dog Grain Free Diabetes. Initially, serve your dog the food over a period of up to 6 months. We then recommend following the advice given to you by a veterinarian on the extended use of the food. Ensure your dog has access to fresh drinking water at all times. Store in a dry and cool place. Once open, store the can in a refrigerator and use all of it within 2 days. Expiration date and batch number located on the bottom of the packaging.



ANALYTICAL COMPONENTS:

CRUDE PROTEIN	7.5%
CRUDE FAT	7.0%
CRUDE ASH	2.0 %
MOISTURE	78.0 %
TOTAL SUGAR (NFE)	2.5%
CRUDE FIBRE	3.5 %
CALCIUM	0.1%
PHOSPHORUS	0.2%
SODIUM	0.1%
STARCH	2%
TOTAL SUGAR	1%
MAGNESIUM	0.08%
OMEGA 3	0.1%
OMEGA 6	0.2%

NUTRITIONAL ADDITIVES PER 1 KG:

VITAMIN A (3A672A) 5,000 IU, VITAMIN D3 (3A671) 300 IU, VITAMIN E (3A700) 300 MG, VITAMIN C (3A312) 150 MG, BIOTIN (3A880) 0.6 MG, ZINC (3B606) 40 MG, IRON (3B106) 15 MG, MANGAN (3B504) 15 MG, POTASSIUM IODIDE (3B201) 1.0 MG, COPPER (3B406) 1.5 MG, SELEN (3B810) 0.05 MG, TAURIN (3A370) 600 MG, L-CARTININ (3A910) 150 MG.

TECHNOLOGICAL ADDITIVES PER 1 KG: CAROB RUBBER (E 410) 5,000 MG.



Brit

GRAIN FREE VETERINARY DIET



STRUVITE

**COMPLETE AND BALANCED DIETARY FOOD FOR DOGS
SUFFERING WITH LOWER URINARY DISEASES**

INDICATIONS:

- NUTRITIONAL SUPPORT WHEN TREATING AN INFLAMED LOWER URINARY TRACT
- DISSOLVES AND PREVENTS STRUVITE STONES AND CRYSTALS
- REDUCES THE RISK OF STRUVITE AND OXALATE STONES FROM FORMING
- NUTRITIONAL SUPPORT WHEN TREATING AN INFECTED LOWER URINARY TRACT

CONTRAINDICATION:

- DO NOT USE URINE ACIDIFYING SUBSTANCES
- CHRONIC KIDNEY INSUFFICIENCY
- HEART DISEASE



NUTRITIONAL PROPERTIES:

CONTROLLED MAGNESIUM, CALCIUM, AND PHOSPHORUS CONTENT

ACIDIFIERS AND BUFFERS

L-CARNITINE, CRANBERRIES & OMEGA-3 FATTY ACIDS

GLUTEN FREE INGREDIENTS WITH LOW GLYCAEMIC INDEX GRAINS

L-TRYPTOPHAN

BENEFITS:

LIMITS EXCESSIVE URINARY SATURATION

FORMATION OF PH URINE, ALLOWING THE DISSOLUTION OF STRUVITES AND PREVENTION OF OXALATE PRODUCTION

ANTI-INFLAMMATORY EFFECTS FOR THE URINARY SYSTEM, PROMOTES DIURESIS

NO RISK OF ALLERGY TO GLUTEN, AND LOW GLYCAEMIC INDEX

SUPPRESSES THE SYMPTOMS OF A STRESS REACTION

METHOD OF USE:

DISSOLVING STRUVITE STONES:

To dissolve struvite stones, serve your dog Brit VD Struvite Dog together with effective antibiotics over a period of 5-12 weeks. Regularly inspect whether your dog's urine's pH level corresponds with the desired value

PREVENTING STRUVITE STONES FROM REFORMING:

In relation to their urine analysis, serve your dog Brit VD Struvite Dog for up to 6 months in order to prevent the formation of new struvite stones. Regularly inspect whether your dog's urine's pH level corresponds with the desired value

EDING TABLE:

DOG'S WEIGHT (KG)	2	5	10	15	20	25	30	40	50	60	70	80
DAILY AMOUNT (G)	35	80	140	190	230	290	320	400	490	560	630	700

FEEDING GUIDELINES:

Serve your dog the food dry or with lukewarm water. Ensure your dog has access to fresh drinking water at all times.

GRAIN FREE
VETERINARY DIET

EGG
& PEA

Composition: yellow peas (25%), eggs (12%), green peas (12%), hydrolysed turkey protein (11%), chicken fat (10%), buckwheat, apple pulp, sodium chloride (3%), salmon oil (3%), hydrolysed chicken liver (2%), minerals, dried algae (0.5%, *Ascophyllum nodosum*), calcium sulphate (0.4%, urine acidifying substance), cranberries (0.3%, *Vaccinium vitis-idaea*), yeast extract (source of mannan-oligosaccharides, 0.022%), β -glucans(0.02%), fructo-oligosaccharides (0.02%), Mojave yucca (0.02%), sea buckthorn(0.015%) .

Metabolizable energy:	3,780 kcal/kg
Package sizes:	12kg & 2 kg

NUTRITIONAL PARAMETERS:

CRUDE PROTEIN	19.0%
FAT CONTENT	16.0%
CRUDE FIBRE	2.8%
CRUDE ASH	6.8%
MOISTURE	10%
OMEGA-3	0.8%
OMEGA-6	2.3%
CALCIUM	0.6%
PHOSPHORUS	0.4%
SODIUM	1.2%
MAGNESIUM	0.04%
POTASSIUM	0.4%
CHLORIDES	1.8%
SULPHUR	0.25%
HYDROXYPROLINE	0.26%
VITAMIN D	650 I.U./KG
METHIONINE	0.8%

NUTRITIONAL ADDITIVES PER 1 KG:
VITAMIN A (3A672A) 22,000 I.U., VITAMIN D3 (E671) 650 I.U., VITAMIN E (3A700) 1,000 MG, CHOLINE CHLORIDE (3A890) 2,300 MG, BIOTIN (3A880) 2.4 MG, VITAMIN B1 (3A821) 11 MG, VITAMIN B2 14 MG, NIACINAMIDE (3A315) 94 MG, CALCIUM- D-PANTHOTHENATE (3A841) 25 MG, VITAMIN B6 (3A831) 7 MG, FOLIC ACID (3A316) 2.4 MG, VITAMIN B12 0.16 MG, ZINC CHELATE OF AMINO ACIDS HYDRATE (3B606) 140 MG, FERROUS CHELATE OF AMINO ACIDS HYDRATE (E1) 65 MG, MANGANESE CHELATE OF AMINO ACIDS HYDRATE (E5) 75 MG, POTASSIUM IODIDE (3B201) 4.2 MG, CUPRIC CHELATE OF AMINO ACIDS HYDRATE (E4) 5 MG, ORGANIC FORM OF SELENIUM PRODUCED BY SACCAROMYCES CEREVISIAE CNCM I-3060 (SELENISED YEAST INACTIVATED) (3B8.10) 0.2 MG, L-CARNITINE (3A910) 350 MG, L-METHIONINE (3C305) 6,000 MG, L-TRYPTOPHAN (3.4.1) 1,000 MG, ENTEROCOCCUS FAECIUM DSM 10663/NCIMB 10415 1x109 CFU.



Brit

GRAIN FREE VETERINARY DIET



STRUVITE

COMPLETE AND BALANCED DIETARY FOOD FOR DOGS WITH LOWER URINARY DISEASES

INDICATIONS:

- NUTRITIONAL SUPPORT WHEN TREATING AN INFLAMED LOWER URINARY TRACT
- DISSOLVES AND PREVENTS STRUVITE STONES AND CRYSTALS
- REDUCES THE RISK OF STRUVITE AND OXALATE STONES FROM FORMING
- NUTRITIONAL SUPPORT WHEN TREATING AN INFECTED LOWER URINARY TRACT

CONTRAINDICATION:

- DO NOT USE URINE ACIDIFYING SUBSTANCES
- CHRONIC RENAL DISEASE
- HEART DISEASE



NUTRITIONAL PROPERTIES:

CONTROLLED MAGNESIUM, CALCIUM, AND PHOSPHORUS CONTENT

ACIDIFIERS AND BUFFERS

L-CARNITINE, CRANBERRIES & OMEGA-3 FATTY ACIDS

GLUTEN FREE INGREDIENTS WITH LOW GLYCAEMIC INDEX GRAINS

L-TRYPTOPHAN

BENEFITS:

LIMITS EXCESSIVE URINARY SATURATION

FORMATION OF PH URINE, ALLOWING THE DISSOLUTION OF STRUVITES AND PREVENTION OF OXALATE PRODUCTION

ANTI-INFLAMMATORY EFFECTS FOR THE URINARY SYSTEM, PROMOTES DIURESIS

NO RISK OF ALLERGY TO GLUTEN, AND LOW GLYCAEMIC INDEX

SUPPRESSES THE SYMPTOMS OF A STRESS REACTION

METHOD OF USE:

Consult with your veterinarian about feeding your dog Brit VD – if combined with Brit VD Dog Grain Free Struvite, adequately reduce the amount given. Serve your dog the food over a period of 5-12 weeks in order to dissolve any struvite stones, or serve for up to 6 months in order to restrict the formation of new struvite stones. Requesting an opinion from your veterinarian is recommended before serving the food to your dog, or before extending the period in which the food will be served. Ensure your dog has access to fresh drinking water at all times.

FEEDING TABLE:

DOG'S WEIGHT (KG)	5-10	10-30	30-60
DAILY AMOUNT (G)	200-400	400-900	900-1500

FEEDING GUIDELINES:

Consult with your veterinarian before feeding your dog a Brit VD diet – if combined with Brit VD Dog Grain Free Struvite, adequately reduce the amount given. In order to dissolve struvite stones, serve your dog the food dry or with lukewarm water over a period of 5-12 weeks, or over a period of 6 months in order to restrict the formation of new struvite stones. Before serving your dog the food or extending the use of the food, we recommend following the advice given to you by a veterinarian. Ensure your dog has access to fresh drinking water at all times. Store in a dry and cool place. Once open, store the can in a refrigerator and use all of it within 2 days. Expiration date and batch number located on the bottom of the packaging.

GRAIN FREE
VETERINARY DIET

TURKEY
WITH PEA

Composition: turkey (55%), green peas (4%), salmon oil (2%), pea flour, lignocellulose, calcium carbonate, dried algae (0.5%, *Ascophyllum nodosum*), sodium chloride (0.5%), calcium sulfate (0.25) %, urinary acidifier), dried cranberries (0.2%, *Vaccinium vitisidaea*), mannan oligosaccharides (0.004%), fructo-oligosaccharides (0.003%), Mojave yucca (0.003%), β -glucans (0.003%), dried sea buckthorn (0.003%) .

Metabolizable energy:	1 060 kcal/kg
Package sizes:	400 g

ANALYTICAL COMPONENTS:

CRUDE PROTEIN	8.0 %
CRUDE FAT	7.0%
CRUDE ASH	3.0%
MOISTURE	78.0 %
CRUDE FIBRE	1.0%
CALCIUM	0.2%
PHOSPHORUS	0.2%
SODIUM	0.8%
MAGNESIUM	0.04%
POTASSIUM	0.3%
CHLORIDES	0.35%
SULPHUR	0.1%
HYDROXYPROLINE	0.1%
VITAMIN D	200 I.U./KG
OMEGA 3	0.2%
OMEGA 6	0.3%

NUTRITIONAL ADDITIVES PER 1 KG:
VITAMIN A (3A672A) 5,000 I.U., VITAMIN D3 (3A671) 200 I.U., VITAMIN E (3A700) 200 MG, BIOTIN (3A880) 0.5 MG, ZINC (3B606) 30 MG, IRON (3B106) 15 MG, MANGANES (3B504) 18 MG, POTASSIUM IODIDE (3B201) 0.9 MG, COPPER (3B406) 1.0 MG, SELEN (3B810) 0.05 MG, L-CARNITINE (3A910) 80 MG, L-METHIONINE (3C305) 4,000 MG, L-TRYPTOFAN (3C440) 250 MG
TECHNOLOGICAL ADDITIVES PER 1 KG: CAROB RUBBER (E 410) 5,000 MG.



Brit

GRAIN FREE VETERINARY DIET



RENAL

**COMPLETE AND BALANCED DIETARY FOOD FOR DOGS WITH
IMPAIRED KIDNEY FUNCTION**

INDICATIONS:

- NUTRITIONAL SUPPORT WHEN TREATING CHRONIC KIDNEY INSUFFICIENCY
- DIET SUITABLE FOR DOGS WITH CARDIORENAL SYNDROME
- LOW PURINE CONTENT FOR URATE AND CYSTINE UROLITHIASIS

CONTRAINDICATION:

- PUPPIES
- PREGNANT OR NURSING DOGS



NUTRITIONAL PROPERTIES:

EGG PROTEIN CONTAINING ESSENTIAL AMINO ACIDS

CHITOSAN COMPLEX, OMEGA-3 UNSATURATED FATTY ACIDS

GLUTEN FREE INGREDIENTS WITH LOW GLYCAEMIC INDEX

LIVELY PROBIOTIC E. FAECIUM AND PREBIOTIC FIBRES

BENEFITS:

WELL-ROUNDED PROTEIN WITH LOW PHOSPHORUS CONTENT FOR MAINTAINING MUSCLE MASS AND PHYSICAL CONDITION

SUPPRESSES THE ABSORPTION OF PHOSPHORUS AND PROMOTES ANTI-INFLAMMATORY EFFECTS

NO RISK OF ALLERGY TO GLUTEN, AND LOW GLYCAEMIC INDEX

SUPPORTS THE INTESTINAL MICROBIOME AND IMMUNE SYSTEM

METHOD OF USE:

CHRONIC KIDNEY INSUFFICIENCY:

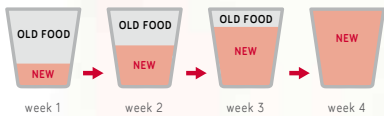
The majority of dogs with chronic kidney disease suffer loss of appetite or anorexia caused by the effect of uraemic toxins on the mucosa of the digestive tract. In anorexia, protein catabolism increases the production of uraemic toxins, thus worsening the condition. Food intake must be maintained, and the gradual switch between your dog's current food to Brit VD Renal Dog needs to be made.

FEEDING TABLE:

DOG'S WEIGHT (KG)	2	5	10	15	20	25	30	40	50	60	70	80
DAILY AMOUNT (G)	35	90	150	210	260	310	350	440	530	600	690	750

FEEDING GUIDELINES:

Serve your dog the food dry or with lukewarm water for up to 6 weeks. Ensure your dog has access to fresh drinking water at all times.



NUTRITIONAL PARAMETERS:

CRUDE PROTEIN	14.0%
FAT CONTENT	17.0%
CRUDE FIBRE	2.8%
CRUDE ASH	4.5%
MOISTURE	10%
OMEGA-3	0.6%
OMEGA-6	2.3%
CALCIUM	0.6%
PHOSPHORUS	0.25%
SODIUM	0.2%
MAGNESIUM	0.07%
POTASSIUM	0.45%
ARGININE	0.42%
TAURINE	0.32%

GRAIN FREE
VETERINARY DIET

EGG
& PEA

Composition: yellow peas (44%), chicken fat (12%), buckwheat, eggs (10%), apple pulp, salmon protein hydrolysed (7%), salmon oil (2%), hydrolysed chicken liver (2%), minerals, egg shells (a source of calcium), potassium citrate (0.8%), psyllium husks and seeds (0.5%), dried algae (0.5%, Ascophyllum nodosum), chitosan (0.08%), yeast extract (source of mannan-oligosaccharides, 0.025%), β -glucans (0.022%), fructo-oligosaccharides (0.02%), Mojave yucca (0.02%), sea buckthorn (0.015%).

Metabolizable energy:	3 890 kcal/kg
Package sizes:	12 kg & 2 kg

NUTRITIONAL ADDITIVES PER 1 KG:

VITAMIN A 21,000 I.U., VITAMIN D3 1,000 I.U., VITAMIN E 1,000 MG, VITAMIN C 500 MG, CHOLINE CHLORIDE 2,200 MG, BIOTIN 2.2 MG, VITAMIN B1 10.5 MG, VITAMIN B2 13.5 MG, NIACINAMIDE 90 MG, CALCIUM-D-PANTHOTHENATE 25 MG, VITAMIN B6 6.5 MG, FOLIC ACID 2.2 MG, VITAMIN B12 0.15 MG, ZINC CHELATE OF AMINO ACIDS HYDRATE 140 MG, FERROUS CHELATE OF AMINO ACIDS HYDRATE 60 MG, MANGANESE CHELATE OF AMINO ACIDS HYDRATE 72 MG, POTASSIUM IODIDE 3.9 MG, CUPRIC CHELATE OF AMINO ACIDS HYDRATE 5 MG, ORGANIC FORM OF SELENIUM PRODUCED BY SACCAROMYCES CEREVISIAE CNCM I-3060 (SELENISED YEAST INACTIVATED) (3B8.10) 0.2 MG, TAURINE 2,200 MG, L-CARTININE 330 MG, ARGININE 3 200 MG, ENTEROCOCCUS FAECIUM DSM 10663/ NCIMB 10415 1x10⁹ CFU



Brit

GRAIN FREE VETERINARY DIET



RENAL

**COMPLETE AND BALANCED DIETARY FOOD FOR DOGS WITH
IMPAIRED KIDNEY FUNCTION**

INDICATIONS:

- NUTRITIONAL SUPPORT WHEN TREATING CHRONIC KIDNEY INSUFFICIENCY
- DIET SUITABLE FOR DOGS WITH CARDIORENAL SYNDROME
- LOW PURINE CONTENT FOR URATE AND CYSTINE UROLITHIASIS

CONTRAINDICATION:

- PUPPIES
- PREGNANT OR NURSING DOGS



NUTRITIONAL PROPERTIES:

TUNA AND SALMON PROTEINS WITH HIGH BIOLOGICAL VALUE

CHITOSAN COMPLEX

GLUTEN FREE INGREDIENTS WITH LOW GLYCAEMIC INDEX

OMEGA-3 UNSATURATED FATTY ACIDS, YUCCA, AND SEA BUCKTHORN

BENEFITS:

WELL-ROUNDED PROTEIN FOR MAINTAINING MUSCLE MASS AND PHYSICAL CONDITION

SUPPRESSES PHOSPHORUS ABSORPTION IN THE INTESTINES

NO RISK OF ALLERGY TO GLUTEN, AND LOW GLYCAEMIC INDEX

ANTI-INFLAMMATORY EFFECTS AND ANTI-OXIDATIVE TISSUE PROTECTION

METHOD OF USE:

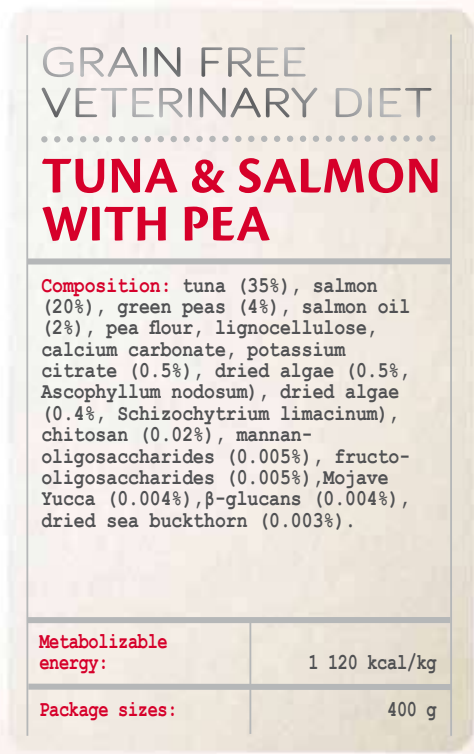
Consult with your veterinarian about feeding your dog Brit VD – if combined with Brit VD Dog Grain Free Renal, adequately reduce the amount given. Serve your dog the food over a period of up to 6 months. Requesting an opinion from your veterinarian is recommended before serving the food to your dog, or before extending the period in which the food will be served. Your dog’s physical condition and weight must be regularly examined by a veterinarian. Ensure your dog has access to fresh drinking water at all times.

FEEDING TABLE:

DOG’S WEIGHT (KG)	5-10	10-30	30-60
DAILY AMOUNT (G)	200-400	400-900	900-1500

FEEDING GUIDELINES:

Consult with your veterinarian before feeding your dog a Brit VD diet – if combined with Brit VD Dog Grain Free Renal, adequately reduce the amount given. Initially, begin by serving your dog the food over a period of 6 months. We then recommend following the advice given to you by a veterinarian on the extended use of the food. Ensure your dog has access to fresh drinking water at all times. Store in a dry and cool place. Once open, store the can in a refrigerator and use all of it within 2 days. Expiration date and batch number located on the bottom of the packaging.



NUTRITIONAL VALUE:

CRUDE PROTEIN	7.0%
CRUDE FAT	7.5%
CRUDE ASH	2.0 %
MOISTURE	78.0 %
CRUDE FIBRE	1.0%
CALCIUM	0.1%
PHOSPHORUS	0.1%
SODIUM	0.2%
MAGNESIUM	0.02%
POTASSIUM	0.3%
ARGININE	0.15%
TAURINE	0.1%
OMEGA 3	0.3%
OMEGA 6	0.2%

NUTRITIONAL ADDITIVES PER 1 KG:
VITAMIN A (3A672A) 5,000 IU, VITAMIN D3 (3A671) 200 IU, VITAMIN E (3A700) 150 MG, VITAMIN C (3A312) 100 MG, BIOTIN (3A880) 0.5 MG, ZINC (3B606) 30 MG, IRON (3B106) 15 MG, MANGAN (3B504) 15 MG, POTASSIUM IODIDE (3B201) 0.8 MG, COPPER (3B406) 1.0 MG, SELENIUM (3B810) 0.05 MG, TAURIN (3A370) 500 MG, L-KARTININ (3A910) 80 MG, L-ARGININ (3C3.6.1) 700 MG. TECHNOLOGICAL ADDITIVES PER 1 KG: CAROB RUBBER (E 410) 5,000 MG.



Brit

GRAIN FREE
VETERINARY DIET



HEPATIC

COMPLETE AND BALANCED DIETARY FOOD FOR DOGS WITH
IMPAIRED LIVERY FUNCTION

INDICATIONS:

- NUTRITIONAL SUPPORT WHEN TREATING CHRONIC LIVER DISEASE
- DIET SUITABLE FOR DOGS WITH PORTOSYSTEMIC SHUNT (PSS)
- REDUCES CLINICAL SYMPTOMS OF LIVER ENCEPHALOPATHY

CONTRAINDICATION:

- PUPPIES
- PREGNANT OR NURSING DOGS



NUTRITIONAL PROPERTIES:

EGG PROTEIN CONTAINING ESSENTIAL AMINO ACIDS

REDUCED COPPER, SILYMARIN, AND ANTIOXIDANTS

GLUTEN FREE INGREDIENTS WITH LOW GLYCAEMIC INDEX

LIVELY PROBIOTIC E. FAECIUM AND PREBIOTIC FIBRES

BENEFITS:

WELL-ROUNDED PROTEIN WITH LOW PHOSPHORUS CONTENT FOR MAINTAINING MUSCLE MASS AND PHYSICAL CONDITION

ANTI-INFLAMMATORY, ANTI-OXIDIZING, PROTECTS THE TISSUES OF THE LIVER

NO RISK OF ALLERGY TO GLUTEN, AND LOW GLYCAEMIC INDEX

SUPPORTS THE INTESTINAL MICROBIOME AND IMMUNE SYSTEM

METHOD OF USE:

INITIAL FEEDING PERIOD:

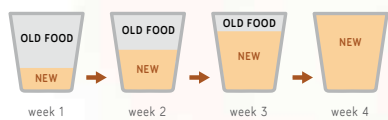
Start by feeding your dog Brit VD Hepatic Dog over a period of up to 6 months. Break up your dog's daily amount of food and serve them several equal portions throughout the day. Do not give your dog any other dog food, people food, or dog treats. In the case of chronic liver insufficiency, the dog food may be served on a long-term basis.

FEEDING TABLE:

DOG'S WEIGHT (KG)	2	5	10	15	20	25	30	40	50	60	70	80
DAILY AMOUNT (G)	35	80	130	180	220	260	300	390	480	550	610	680

FEEDING GUIDELINES:

Serve your dog the food dry or with lukewarm water for up to 6 weeks. Break up your dog's daily amount of food and serve them smaller portions throughout the day. Ensure your dog has access to fresh drinking water at all times.



NUTRITIONAL PARAMETERS:

CRUDE PROTEIN	16.0%
FAT CONTENT	16.0%
CRUDE FIBRE	3.2%
CRUDE ASH	4.5%
MOISTURE	10%
TOTAL SUGAR (AS NFE)	50.3%
OMEGA-3	0.6%
OMEGA-6	2.3%
CALCIUM	0.7%
PHOSPHORUS	0.5%
SODIUM	0.15%
MAGNESIUM	0.1%
COPPER	0.001%

GRAIN FREE
VETERINARY DIET

EGG
& PEA

Composition: yellow peas (20%), sweet potatoes, eggs (14%), apple pulp, buckwheat, chicken fat (8%), hydrolysed turkey protein (7%), salmon oil (2%), hydrolysed chicken liver (2%), minerals, dried algae (0.5%, *Ascophyllum nodosum*), milk thistle seeds (0.2%), yeast extract (source of mannan-oligosaccharides, 0.022%), β -glucans (0.02%), fructo-oligosaccharides (0.02%), Mojave yucca (0.02%), sea buckthorn (0.015%).

Metabolizable energy:	3,830 kcal/kg
Package sizes:	12kg & 2 kg

NUTRITIONAL ADDITIVES PER 1 KG:
VITAMIN A (3A672A) 23,000 IU, VITAMIN D3 (E671) 1,000 IU, VITAMIN E (3A700) 1,000 MG, VITAMIN C (3A312) 500 MG, CHOLINE CHLORIDE (3A890) 2,200 MG, BIOTIN (3A880) 2.2 MG, VITAMIN B1 (3A821) 10.5 MG, VITAMIN B2 13 MG, NIACINAMIDE (3A315) 88 MG, CALCIUM-D-PANTHOTHENATE (3A841) 30 MG, VITAMIN B6 (3A831) 6.5 MG, FOLIC ACID (3A316) 2.2 MG, VITAMIN B12 0.15 MG, ZINC CHELATE OF AMINO ACIDS HYDRATE (3B606) 150 MG, FERROUS CHELATE OF AMINO ACIDS HYDRATE (E1) 65 MG, MANGANESE CHELATE OF AMINO ACIDS HYDRATE (E5) 60 MG, POTASSIUM IODIDE (3B201) 4.5 MG, ORGANIC FORM OF SELENIUM PRODUCED BY *SACCAROMYCES CEREVISIAE* CNCM I-3060 (SELENISED YEAST INACTIVATED) (3B810) 0.2 MG, TAURINE (3A370) 2,200 MG, L-CARNITINE (3A910) 330 MG, *ENTEROCOCCUS FAECIUM* DSM 10663/NCIMB 10415 1x10⁹ CFU.



Brit

GRAIN FREE VETERINARY DIET



HEPATIC

**COMPLETE AND BALANCED DIETARY FOOD FOR DOGS WITH
IMPAIRED LIVERY FUNCTION**

INDICATIONS:

- NUTRITIONAL SUPPORT WHEN TREATING CHRONIC LIVER DISEASE
- DIET SUITABLE FOR DOGS WITH PORTOSYSTEMIC SHUNT (PSS)
- REDUCES CLINICAL SYMPTOMS OF LIVER ENCEPHALOPATHY

CONTRAINDICATION:

- PUPPIES
- PREGNANT OR NURSING DOGS



NUTRITIONAL PROPERTIES:

TURKEY PROTEIN WITH HIGH BIOLOGICAL VALUE

REDUCED COPPER, SILYMARIN, AND ANTIOXIDANTS

GLUTEN FREE INGREDIENTS WITH LOW GLYCAEMIC INDEX

OMEGA-3 UNSATURATED FATTY ACIDS, YUCCA, AND SEA BUCKTHORN

BENEFITS:

WELL-ROUNDED PROTEIN FOR MAINTAINING MUSCLE MASS AND PHYSICAL CONDITION

ANTI-INFLAMMATORY, ANTI-OXIDIZING, PROTECTS THE TISSUES OF THE LIVER

NO RISK OF ALLERGY TO GLUTEN, AND LOW GLYCAEMIC INDEX

ANTI-INFLAMMATORY EFFECTS AND ANTI-OXIDATIVE TISSUE PROTECTION

FEEDING GUIDELINES:

Consult with your veterinarian about feeding your dog Brit VD – if combined with Brit VD Dog Grain Free Hepatic, adequately reduce the amount given. Serve your dog the food over a period of up to 6 months. Requesting an opinion from your veterinarian is recommended before serving the food to your dog, or before extending the period in which the food will be served. Ensure your dog has access to fresh drinking water at all times.

FEEDING TABLE:

DOG’S WEIGHT (KG)	5-10	10-30	30-60
DAILY AMOUNT (G)	200-400	400-800	800-1400

FEEDING GUIDELINES:

Consult with your veterinarian before feeding your dog a Brit VD diet – if combined with Brit VD Dog Grain Free Hepatic, adequately reduce the amount given. Initially, begin by serving your dog the food over a period of 6 months. We then recommend following the advice given to you by a veterinarian on the extended use of the food. Ensure your dog has access to fresh drinking water at all times. Store in a dry and cool place. Once open, store the can in a refrigerator and use all of it within 2 days. Expiration date and batch number located on the bottom of the packaging.

GRAIN FREE
VETERINARY DIET

TURKEY
WITH PEA

Composition: turkey (55%), green peas (4%), salmon oil (2%), pea flour, lignocellulose, calcium carbonate, dried algae (0.5%, Ascophyllum nodosum), milk thistle seeds (0.2%), mannan-oligosaccharides (0.005%), fructo-oligosaccharides (0.013%), Mojave yucca (0.0034%), β-glucans (0.004%), dried sea buckthorn (0.003%).

Metabolizable energy:	1 200 kcal/kg
Package sizes:	400 g

ANALYTICAL COMPONENTS:	
CRUDE PROTEIN	9.0%
CRUDE FAT	9.0%
CRUDE ASH	2.0 %
MOISTURE	78.0 %
CRUDE FIBRE	1.0%
TOTAL SUGAR (NFE)	4.0 %
CALCIUM	0.1%
PHOSPHORUS	0.3%
SODIUM	0.2%
MAGNESIUM	0.08%
COPPER	0.1%
OMEGA 3	0.1%
OMEGA 6	0.2%

NUTRITIONAL ADDITIVES PER 1 KG:
VITAMIN A (3A672A) 5,000 IU, VITAMIN D3 (3A671) 200 IU, VITAMIN E (3A700) 200 MG, VITAMIN C (3A312) 100 MG, BIOTIN (3A880) 0.6 MG, ZINC (3B606) 40 MG, IRON (3B106) 15 MG, MANGAN (3B504) 15 MG, POTASSIUM IODIDE (3B201) 1.0 MG, SELEN (3B810) 0.05 MG, TAURIN (3A370) 600 MG, L-KARTININ (3A910) 80 MG.
TECHNOLOGICAL ADDITIVES PER 1 KG: CAROB RUBBER (E 410) 5,000 MG.



Brit

GLUTEN & GRAIN-FREE
VETERINARY CARE



STERILISED

COMPLETE FOOD FOR STERILISED ADULT DOGS OF ALL BREEDS

INDICATIONS:

- WEIGHT CONTROL IN STERILISED DOGS
- BODY CONDITION SUPPORT IN STERILISED DOGS
- SUPPORT OF HEALTHY SKIN AND COAT & URINARY TRACT



NUTRITIONAL PROPERTIES:

EASILY DIGESTIBLE DIETARY SALMON PROTEIN WITH A LOW FAT CONTENT AND L-CARNITINE

OMEGA-3 FATTY ACIDS AND HERBAL COMPLEX WITH CRANBERRIES

FORMULATION FREE OF GLUTEN, CHICKEN PROTEIN AND CHICKEN FAT

PROBIOTIC CULTURE AND PREBIOTIC FIBRES

BENEFITS:

WEIGHT CONTROL AND CONDITION SUPPORT IN STERILISED DOGS

NUTRITIONAL SUPPORT OF SKIN AND COAT AND URINARY TRACT HEALTH

NO RISK OF ALLERGY/INTOLERANCE TO GLUTEN OR CHICKEN PROTEIN

SUPPORTS THE INTESTINAL MICROBIOME AND IMMUNE SYSTEM

FEEDING TABLE:

DOG'S WEIGHT (KG)	2	5	10	15	20	25	30	40	50	60	70	80
DAILY AMOUNT (G/DAY)	40	90	150	190	240	280	320	390	460	530	600	660

FEEDING GUIDELINES:

~~Consult the use of Brit VD food with your veterinarian.~~ Serve the food dry or moistened with lukewarm water. Ensure your dog has access to fresh drinking water at all times.

GLUTEN & GRAIN-FREE
VETERINARY CARE

SALMON
& PEA

Composition: dehydrated salmon (30%), yellow peas, hydrolysed salmon protein (14%), dried apple pulp, coconut oil, lignocellulose (3%), salmon oil (3%), hydrolyzed salmon gravy (2%), sodium chloride, psyllium husk & seeds (1%), potassium chloride, pea flour, glucosamine (0.11%), dried Vaccinium vitis-idaea (0.2%), dried Urtica dioica (0.12%), dried Carlina acaulis (0.08%), chondroitine sulphate (0.079%), β-glucans (0.02%), fructo-oligosaccharides (0.02%), yeast extract (source of mannan-oligosaccharides, 0.014%), methyl sulfonyl methan (0.013%), dried sea buckthorn (0.01%), Boswellia serrata (0.008%), green-lipped mussels (0.007%), Mojave yucca (0.007%), Lactobacillus helveticus HA - 122 inactivated (15x10⁹ cells/kg).

Metabolizable energy:	3,460 kcal/kg
Package sizes:	12 kg, 2 kg, 400 g

NUTRITIONAL PARAMETERS:

CRUDE PROTEIN	26.0%
CRUDE FAT	12.0%
CRUDE FIBRE	5.0%
CRUDE ASH	7.5%
MOISTURE	10.0%
OMEGA-3	1.0%
OMEGA-6	0.9%
CALCIUM	1.2%
PHOSPHORUS	0.8%
SODIUM	1.1%
POTASSIUM	0.5%
MAGNESIUM	0.05%

NUTRITIONAL ADDITIVES PER 1 KG:
VITAMIN A (3A672A) 22,000 IU, VITAMIN D3 (3A671) 1,500 IU, VITAMIN E (3A700) 400 MG, VITAMIN C (3A312) 400 MG, CHOLINE CHLORIDE (3A890) 450 MG, BIOTIN (3A880) 0.6 MG, VITAMIN B1 (3A821) 4.5 MG, VITAMIN B2 (3A825I) 5.8 MG, NIACINAMIDE (3A315) 27 MG, CALCIUM-D-PANTOTHENATE (3A841) 13.5 MG, VITAMIN B6 (3A831) 4.8 MG, FOLIC ACID (3A316) 0.7 MG, VITAMIN B12 0.04 MG, ZINC (3B606) 85 MG, IRON (3B106) 65 MG, MANGANESE (3B504) 32 MG, IODINE (3B201) 0.6 MG, COPPER (3B406) 12.5 MG, SELENIUM (3B810) 0.18 MG, L-CARNITINE (3A910) 350 MG, TAURINE (3A370) 2,000 MG.



Brit

GRAIN FREE
VETERINARY DIET



RECOVERY

THERAPEUTIC NUTRITION FOR DOGS AND CATS DURING
RECONVALESCENCE

INDICATIONS:

- NUTRITIONAL SUPPORT WHEN SUFFERING FROM A DISEASE OR INAPPETENCE
- SUPPORTS RECONVALESCENCE AFTER AN OPERATION OR SERIOUS ILLNESS
- DIET FOR ADMINISTRATION VIA BOTTLE OR ECTOPIC PROBE
- INCREASES FOOD INTAKE, EVEN IF THE DOG OR CAT IS SUFFERING WITH REDUCED APPETITE

CONTRAINDICATION:

- PANCREATIC INFLAMMATION
- LIVER ENCEPHALOPATHY



NUTRITIONAL PROPERTIES:

HIGH CONCENTRATION OF ENERGY
EASILY DIGESTIBLE DIETARY PROTEINS WITH HIGH BIOLOGICAL VALUE
GLUTEN FREE INGREDIENTS WITH LOW GLYCAEMIC INDEX
TAURINE, GLUTAMATE, L-ARGININE, L-METHIONINE
EPA AND DHA, B-GLUCANA, MOS AND FOS

BENEFITS:

SUPPORTS QUICK STRENGTH RENEWAL AND REGENERATION
WELL-ROUNDED PROTEIN FOR SUPPORTING THE REGENERATION OF MUSCLE MASS AND PHYSICAL CONDITION
NO RISK OF ALLERGY TO GLUTEN, AND LOW GLYCAEMIC INDEX
ACCELERATES HEALING AND TISSUE REGENERATION
ANTI-INFLAMMATORY EFFECTS AND IMMUNITY SUPPORT

METHOD OF USE:

For subjects whose digestive functions were interrupted by anorexia, it may be necessary to gradually increase their amount of food over the course of 3 days: D1: 1/3 of the daily caloric intake, D2: 2/3 of the daily caloric intake, D3: full daily caloric intake.

The daily caloric intakes listed below must be adjusted according to the subject's needs in order to achieve or maintain the optimal body weight. This can be done by splitting the daily amount into 3-6 portions.

FEEDING TABLE:

DOG'S WEIGHT (KG)	5-10	10-30	30-60	
DAILY AMOUNT (G)	200-400	400-800	800-1300	
CAT'S WEIGHT (KG)	2	4	6	10
DAILY AMOUNT (G)	200	350	450	600

FEEDING GUIDELINES:

Consult with a veterinarian when feeding your dog Brit VD – We then recommend following the advice given to you by the veterinarian on the extended use of the food. Ensure your dog has access to fresh drinking water at all times. Store in a dry and cool place. Once open, store the can in a refrigerator and use all of it within 2 days. Expiration date and batch number located on the bottom of the packaging.

GRAIN FREE VETERINARY DIET

SALMON

Composition: salmon (30%), chicken liver (25%), salmon oil (2%), pea flour, brewer's yeast (1.5%), lignocellulose, calcium carbonate, dried algae (0.5%, *Schizochytrium limacinum*), Indian plantain pods and seeds (0.5%), dried algae (0.5%, *Ascophyllum nodosum*), mannan oligosaccharides (0.006%), β -glucans (0.005%), fructo-oligosaccharides (0.005%), Mojave yucca (0.005%), dried sea buckthorn (0.004%).

Metabolizable energy:	1 090 kcal/kg
Package sizes:	400 g

ANALYTICAL COMPONENTS:

CRUDE PROTEIN	9.0%
CRUDE FAT	8.0 %
CRUDE ASH	1.5%
MOISTURE	80.0 %
CRUDE FIBRE	1.5%
CALCIUM	0.1%
PHOSPHORUS	0.25%
SODIUM	0.2%
MAGNESIUM	0.1%
EPA (20:5 N-3)	0.01 %
DHA (22:6 N-3)	0.15%
OMEGA 3	0.3%
OMEGA 6	0.2%

NUTRITIONAL ADDITIVES PER 1 KG:

VITAMIN A (3A672A) 5,000 I.U., VITAMIN D3 (3A671) 350 I.U., VITAMIN E (3A700) 200 MG, VITAMIN C (3A312) 150 MG, BIOTIN (3A880) 0.7 MG, ZINC (3B606) 55 MG, IRON (3B106) 20 MG, MANGANESE (3B504) 20 MG, POTASSIUM IODIDE (3B201) 1.3 MG, COPPER (3B406) 4 MG, SELENIUM (3B810) 0.05 MG, TAURINE (3A370) 1,500 MG, SODIUM GLUTAMATE (2B621) 3,000 MG, L-ARGININE (3C3.6.1) 1,000 MG, L-METHIONINE (3C305) 2,000 MG

TECHNOLOGICAL ADDITIVES PER 1 KG: CAROB RUBBER (E 410) 5,000 MG.



Brit

VAFO PRAHA S.R.O.
K BRŮDKU 94
252 19 CHRÁŠTANY
CZECH REPUBLIC
WWW.BRIT-PETFOOD.COM

 www.facebook.com/brit